

SOUTH PACIFIC PERFIN BULLETIN

NO. 91 OCTOBER 2010

The South Pacific Perfin Bulletin is published by the Perfin Club of New Zealand and Australia four times each year. Club subscriptions (including payment for the Bulletin) are A \$10-00 p.a. for New Zealand and Australian residents and A \$15-00 p.a. for residents of other countries (including airmail postage). Back issues available from Secretary.

President & Librarian: David Coath, 4 Fleming Court, Research, Victoria 3095, Australia
email – davidcoath@onthe.net.au

Secretary: John Mathews, 21 McConnel Cres, Kambah ACT 2902, Australia
email – john.mathews@canberra.edu.au

Treasurer: Lindsay Parker, 3 Byethorne Ave., Naracoorte SA 5271 Australia
email - lwparker@adsl.on.net

Treasurer (NZ payments): Richard Smolnicki, 19 Oakleigh Street, Maungaraki, Lower Hutt, 5010 NZ
email - RSmolnicki@xtra.co.nz

Editor: David Andersen, 260 Hawkesbury Rd, Winmalee NSW 2777, Australia
email- d.andersen@library.usyd.edu.au

Circuit Managers:
New Zealand Ray Bennett, PO Box 354, Timaru, 7940 New Zealand
Australia John Mathews, 21 McConnel Cres, Kambah ACT 2902, Australia

EDITOR'S COMMENT

There are a couple of anniversaries coming up in the next year or two for the Perfin Club of New Zealand and Australia. The Club was started at the end of 1986 so the Club's 25th anniversary is coming up at the end of next year. We also expect the 100th issue of the Bulletin to be produced fairly soon after, in January 2013. Both of these are milestones which could be recognised or celebrated in some way. However, the big question is how you would like to do this. We would like to hear your suggestions soon so that this can be organised in time.

For example, one suggestion is to celebrate the 100th issue of the Bulletin by issuing it in colour (if there are enough nice colour illustrations for the articles). There may be other anniversaries at the same time that could suggest a particular activity. By chance the Canberra centenary will be held in January 2013 also. This might be something we could link to our activities in some way.

Please contact John Mathews or David Coath (details above) with your great ideas.

David Andersen

NEW MEMBERS

We welcome the following new members who have joined since the previous issue:

#268 Alastair Watson, Stillwater, Oklahoma, USA
#269 Kelvyn Peters, Redcliffe, Queensland

SYDNEY STAMP EXPO 2011

Sydney Stamp Expo 2011 will be held at the Royal Randwick Racecourse from Thursday 31 March 2011 to Sunday 3 April 2011. Those who attended the last one at that venue in 2007 will recall what a great venue it was for such an exhibition with easy access, public transport services, and free parking. The Club will seek a time/room for a meeting of Club members, hopefully on the Saturday afternoon to cater for all who wish to attend. So put aside any items of interest which you may wish to bring along and share with other members. Confirmation of the meeting time will appear in the January 2011 Bulletin.

VALE JUDITH SIDAWAY and ALLAN BERRY

It is with much regret that we have learned that New Zealand member Judith Sidaway passed away at the end of June 2010. Judith had been one of the founding members of the Club in 1987, and had contributed material for the Bulletin and entered philatelic exhibitions. We offer our condolences to her family.

Likewise, it with much regret that we have learned that New Zealand member Allan Berry passed away in September 2010. Allan had joined more recently and was particularly interested in literature about perfins. We had the pleasure of meeting Allan at Canberra StampShow 2010 in March this year. We extend condolences to Allan's family.

MANDURAH 2010

The Mandurah Philatelic Society Inc. & Peel Region Numismatic Group are conducting MANDURAH 2010, a National Stamp, Coin & Postcard Fair, from 19 to 21 November 2010 at the Mandurah Performing Arts Centre, Ormsby Terrace, Mandurah, West Australia. Included in this exhibition is a National One Frame Philatelic Competition.

CONTACTS WANTED

New member Alastair Watson (an ex-pat Kiwi living in USA) is interested in the New Zealand stamp issues 1900-08 ½d Mt Cook and 1916 1½d KGV, especially with perfins. He would be interested to exchange/trade/exchange-information with others with similar interests. His email contact is hare.copper@yahoo.com. His postal address is available from the Secretary for those who do not have email access.

CREDIT CARD TRANSACTIONS

Unfortunately the member who has been actioning credit card transactions for auctions, subs., etc, is no longer able to do so. Therefore, payment by credit card will not be possible unless another member is able to do these for us. The Club covers any fees involved. Can any member (preferably in Australia) help with this please? Please contact your Secretary.

FINANCIAL STATEMENT - PERFIN CLUB OF NEW ZEALAND AND AUSTRALIA

Statement of Receipts and expenditure for the year ended 30 June 2010 (Australian account).

Receipts (A\$)		Expenditure (A\$)	
Bank balance 1.7.09	7,702.87		
Subscriptions	1,742.00	Bulletins (printing)	870.00
Bank interest	0.87	Bank & Govt charges	14.00
Exchange Branch	10,799.36	Exchange Branch	11,183.05
Auction 1/09	2,174.35	Auction 1/09	2,023.95
Auction 2/09	985.20	Auction 2/09	903.90
"HAPP" sales	195.00		
"AOP" sales	385.00	Canberra 2010 entry fee	30.00
Bulletin back issues, sales	100.00	Canberra 2010 covers	171.50
Interest, Term Deposit	495.00	Postage & Stationery	1,121.40
Transfer from NZ a/c	1,319.01	Refund	62.15
Miscellaneous	257.20	Donation	225.00
For member' credit	390.00	Bank balance 30.6.10	8,621.90
	-----		-----
Total	25,226.85	Total	25,226.85

The bank balance shown for 30.6.10 is made up as follows:

At bank	\$7,302.89
Undeposited cheque	<u>1,319.01</u>
Total	8,621.90

In addition, the Club has \$15,000 in a NAB Term Deposit.

Our thanks to David Coath for his good work in managing our Australian account for the last 3 years. We welcome Lindsay Parker as the new Treasurer.

NEW ISSUE FOR NEW ZEALAND PERFIN

Richard Smolnicki reports finding a 1/3 orange-yellow Arms issue with Perfin VOCO (pf43) – not previously recorded on this issue. The stamp is fiscally used.

ALEXANDER MAIR & CO (John Mathews)

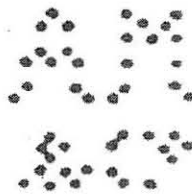
Alexander Mair was born in 1826 in Paisley, near Glasgow, Scotland, came to Victoria in 1854, and established a business as a "shipsmith" and later as a timber, iron and steel merchant. From a small beginning, the business expanded rapidly and in 1880 new commodious premises were built for Alexander Mair & Co on the corner of Victoria and Leicester Streets, Melbourne. At that time, they were described as importers, iron merchants, and suppliers of coachbuilders' and wheelwrights'

materials. Alexander Mair returned to Scotland in 1884 and his son Alexander Mair, jr, (born 1859) took over the business.

In 1915, the family business passed to the third generation Alexander Mair (born 1889) and moved into hardware. After a bout of influenza in the 1919 epidemic, Alexander sold the steelyard in 1922 to Eliza Tinsley Pty Ltd, and in 1925 sold the company's other assets to James McEwan & Co Pty Ltd, although he remained as a director until 1927.



Alexander Mair (1859-1915)

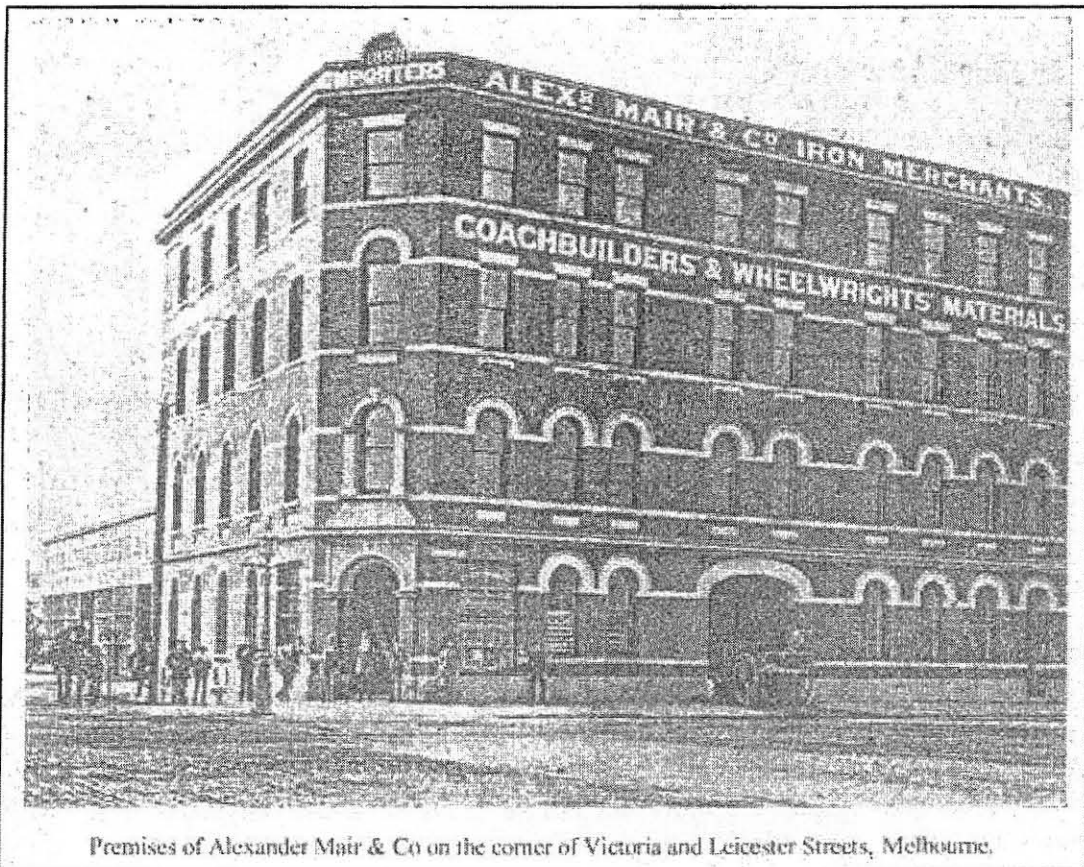


AM&CO.1

(Edward T. Moulden applied to perforate on behalf of this company in 1893.)



Alexander Mair (1889-1969)

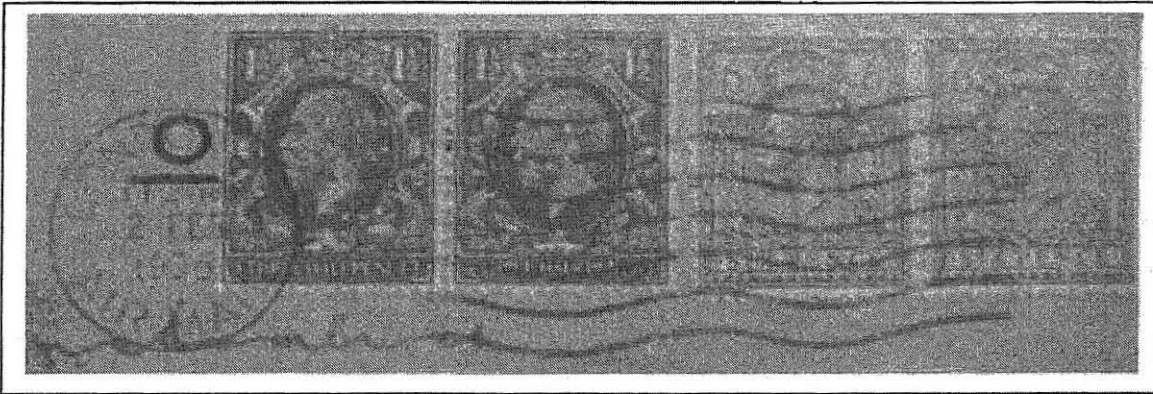


Premises of Alexander Mair & Co on the corner of Victoria and Leicester Streets, Melbourne.

MORE INFORMATION ABOUT THE "CofA" PERFORATOR (John Mathews)

A cover of the Australian High Commission in London (Official Secretary) which sold on eBay in October 2010 has provided some more information about the "CofA" perforator used by the High Commission.

The illustration shows the top right corner of the envelope in detail. The postage of 1/3 was paid using a joined pair of 6d KGV (watermark unknown, but probably 1926 issue) and a joined pair of 1½d brown KGV (photogravure issue of 1934).



The strikes of "CofA" on the 6d stamps are positions 6 and 4, and on the 1½d stamps positions 2 and 8. In each case, this means that the stamps were turned over horizontally (relative to the upright orientation of the stamps) between strikes. If the "CofA" die was arranged sideways on the perforator, and the sheet of stamps torn into rows, this would not have been necessary, as the row of stamps could have been slid through under the head without having to be turned over. So the conclusion is that the "CofA" die was arranged in the upright position (the top of the strikes is the same distance from the "free" edge of the stamp in each case, so not "inverted"), and in these cases columns (at least 2) of stamps were torn from the sheets and slid through the perforator sideways, the stamps being turned over to perforate the second column of stamps.

Supporting evidence that the sheets of stamps had been separated into columns, not rows, and the stamps perforated in the sideways position, comes from the different positions vertically of the strikes on the different stamps.

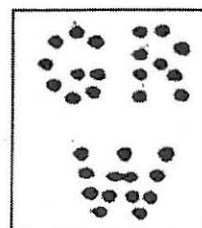
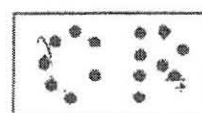
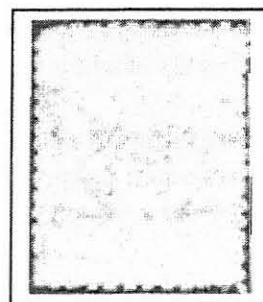
On the large "Seahorse" issues, there are no known strikes of "CofA" in a sideways position, and the top of the pattern is nearly always the same distance from the edge of the stamps as on the stamps shown above. This is consistent with the die being arranged horizontally on the perforator.

Collectors of the "CofA" and "C/of/A" patterns will be aware that many of the "C/of/A" strikes are sideways (often resulting in part of the pattern being off the stamps), indicating that the staff had torn these sheets into columns when using this perforator despite that fact that the spacing of the two "C/of/A" punch heads clearly indicates that it was designed for the sheets to be torn into rows!

PERFIN "MYSTERIES" ? (John Mathews)

Member Gordon Monk has submitted the two items shown.

The top item is a South Australia 8d on 9d brown Queen Victoria, and has what looks like an "M" pattern which is unlike any of the "M" patterns so far known. The scan of the reverse of the stamp has been "flipped" to show the orientation as seen from the front of the stamp. There are no "M" patterns previously recorded on South Australian stamps. Unfortunately, the date is not visible on the front of the stamp. The nature of the holes suggests that they were punched with the stamp facing upwards. At first, I suspected that the pattern may have been done by hand, and possibly a forgery. However, on closer inspection, I see that the holes are of even size, and reasonably "clean" around the edges. On the other hand, the letter is somewhat skewed from the vertical, and the lowest pins on each leg are not aligned with the others. Overall, it does look like a genuine die, but perhaps not one made by an experienced die-sinker. It will be listed as M.17, but with a doubt about its status at this stage. If anyone comes across a similar item, we would be most keen to hear of it.



The other item is a pattern which looks like "GR", and is on a South Australian 1d red Queen Victoria stamp. Again, it is disappointing that there is no readable date on the postmark (part of a roller machine cancel?). The pattern is upright and normal orientation, and again the scan of the back of the stamp has been "flipped" to show it as it appears from the front. The pattern GRW.1 is shown below it for comparison (the elongation of the holes is a result of this pattern being scanned many years ago on a poor quality copier!). The "GR" is obviously a part of the pattern GRW.1 rather than the "GR" patterns of the New South Wales Government Railways. There is also a "blind" hole at the lower end of the right leg of the 'R' of "GR" which matches the last hole of the 'R' of GRW.1 but does not show up in the scan. There is no evidence of holes where they appear to be missing in the "G". The question then arises as to whether this is a different perforator to GRW.1 or a partial strike of it, or is there some other explanation?

Because of the "blind" hole at the end of the "R", my first thought was that it was a partial strike of GRW.1 and that the pins of the "W" on the next line had failed to touch the stamp at all. Against this, I could offer no explanation for the completely missing holes in the "G", which I think have not been recorded before.

Could it be a different perforator? GRW.1 is rated "Very Common" and is known used from 1896, and it would seem unlikely that there was another perforator with just the "GR" pattern which had not yet been discovered.

Another possible explanation could be that the perforator was originally made with or without a "W", and that pins fell out early in its use (evidenced by those missing from

the "G"). If it was made originally without a "W", this letter may have been added when the lost pins in the "G" were replaced.

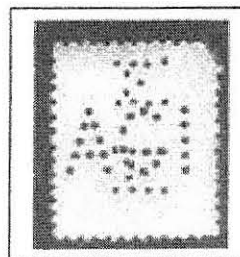
Other similar examples, and other possible explanations, will be received with much interest.

MEMORY OF AGI (Graham Quinton)

I have been asked by Arthur Taylor to delve into the past and set down my memories of stamp duty stamps in the 1960's. I was employed by Mercantile Mutual Insurance Company limited in 1964 and they placed me in a subsidiary Australian General Insurance Company limited. They had their offices on the 6th floor of 117 Pitt Street, Sydney. As the newest junior one of my jobs was involved with the stamp duty stamp. My memories may not be 100% correct due to the time that has passed, but they are as follows.

First thing each morning I retrieved a petty cash box from the safe on the ground floor containing the unused stamps. There were a number of other boxes there with cash, postage stamps and stamp duty stamps for the various Departments of the group. Throughout the day I affixed the duty stamps to policy documents, renewal certificates and policy endorsements, all of these documents having been typed out by the typists. Once the stamps had been affixed, a company stamp was used to cancel the stamps. The amount of duty was usually based on the premium charged but some of the policies has a specific amount. I can recall for public liability the amount was 1/6d. At the end of the day the stamps were balanced out and then the box was returned to the safe.

At random intervals there would be a snap audit done by a senior staff member from a different department. When the duty stamps required replenishment I obtained a cheque from the Accounts Department and then walked to the Duty Office. However I cannot recall where it was. I then returned with the stamps and gave them to another staff member whose role it was to perforate the stamps. I can remember that the machine was large with an arm that was raised and lowered to perforate the duty stamps. I think it had two heads for perforating.



If duty stamps had been affixed to a document and a mistake had been made as to the amount affixed the documents were put aside until a number had been accrued. I then took the documents to an accountant's office who verified the amount of stamps and then arranged for a refund to be obtained less a fee, which I think was one and a half percent. The fee was paid by AGI, not me, fortunately.

This was not one of the jobs that I enjoyed and I had not thought about it for over 45 years until I talked to Arthur. I hope that my memories are of interest to your group.

[Editor: The illustration is of a New South Wales Stamp duty issue with both AGI and MM perfins. As AGI was a subsidiary of Mercantile Mutual, the link is easy to understand, though why they would bother to re-puncture stamps from the other company is unclear.]

“F” IS FOR FARMER AND CO. David Coath)

The “F” of Farmers is without doubt one of the most stylish patterns used on Australian stamps. When well struck it has a beauty that separates it from other letter based perfins. Sadly good strikes are not the rule.




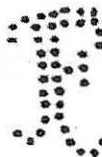
I have always had trouble telling the two F patterns (F.1 and F.2) apart and was stumped by John Mathew’s notation that there were two types of each pattern. As a result I tended to avoid them, despite their beauty and put aside any spares I had to look at one day. At the last Canberra Show I was most taken with Mark Saxby’s display of perfins that boldly started with the rare 5/- Bridge with a Farmers “F” perfin. A rare gem of a stamp.

In speaking with Mark about this stamp I told him of an article that I had read in the Bulletin that talked about these “F” patterns and I promised to find it for him. In addition I undertook to sort my copies and confirm the validity of the article. After much searching I found the article (working backwards from 2010) and to my surprise it was just a couple of images and an almost throw away statement about the pattern. You can find the article in the SPPB #4, July 1988, but it is below in full:


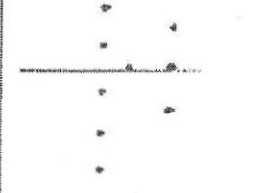
“He asks about the ornate F pattern found on Commonwealth issues (Aust Ed.- have seen four similar patterns illustrated below. All postmarked Sydney. Types 1 and 2 have smaller holes and are found on Commonwealth issues to the mid 1930’s. Types 3 and 4 with larger holes are found on issues from the late 1930’s and 1940’s).”

The “Aust. Ed” was our current Editor David Andersen and his findings are as far as I can tell the nub of it. This also clarifies the 2 types referred to in John Mathews’ HAPP. It brought home to me the valuable information in the old Bulletins and I would encourage you to read through them when you get a chance.

The article included some images but I have made some fresh ones here:

			
F.1 thin Type 1 1924-1932/34	F.2 thin Type 1 1924-1932/34	F.1 thick Type 2 1938-1940	F.2 thick Type 2 1938-1940

The best way to tell the difference between F.1 and F.2 is from the cross bar as below:

F.1	F.2
	

To confirm these observations I got out all my F.1 and F.2's and the envelope of spares that I had put aside, about 250 copies in all, and I sorted them by pattern and issue, then laid them out chronologically. After struggling through all of these copies (including the many partials) I came to almost the same conclusion as David had in the Bulletin article #4.

The device had two heads with F.1 on the left and F.2 on the right. The device started to deteriorate in the early 1930s, particularly in the top left hand corner of both dies. The dies seem to have been repaired around 1932-34 and a slightly different pattern was formed. It is nearly impossible to detect any change in the F.1 die but it is more noticeable with the F.2 die where the curl on the top left of the pattern has a few slightly different pin locations. This later F.2 die did not wear well and it is characterized by a lot of missing pins.

In 1938 the dies seem to have been remade with thicker pins and these are the 2nd types of F.1 and F.2. The remade dies would have removed a fair bit of paper and because of the size of the holes and the number of pins some holes tended to merge. Not a good thing with the smaller KGVI definitives then in use. These thick pinned strikes are not all that common, coming at the end of the life of the device.

There is some evidence to suggest that the device was again modified very later in its life and that some pins were removed. This produced an "F" with thicker holes but less pins. Copies are also characterized by blind and poorly punched patterns and are barely recognizable as the beautiful "F"s that were created in its early days.

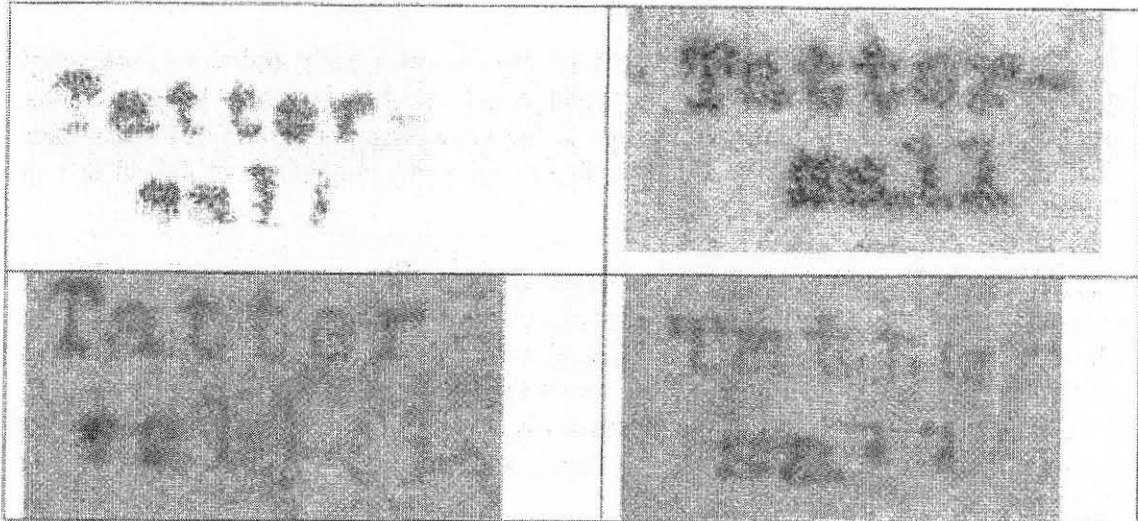
It seems likely that the deterioration in this device, combined with the reduction in size of stamps and the onset of the Second World War conspired to end the use of this iconic pattern.

[Thanks to Dave Elsmore for loaning about 200 copies and 1930's usage patterns to help my research]

TATTERSALLS UNDERPRINTS

There is a very interesting thread on the StampBoards site relating to the Tattersalls underprints. Quite a few items that we have not yet noted are illustrated. Based on the information on that site and that already reported it is possible to start to get a better picture of these items.

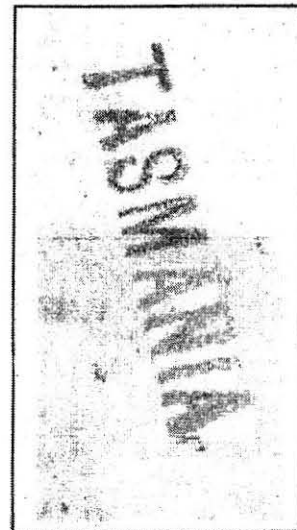
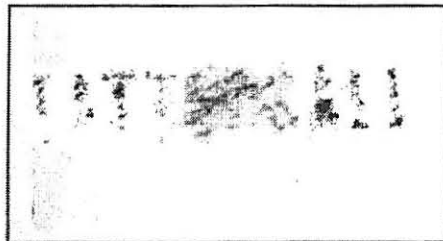
There are quite a few different types recorded examples of which are illustrated below. The spacing of the letters varies considerably but because of their likely method of production and short life of each 'die' I doubt it is worth trying to classify the differences. Copies in a range of colours of ink have been recorded ranging from red to purple and inverted copies are common.ink



Issues recorded with these patterns include:

- KGV single wmk 1d violet, 1½d red, 1½d green
- KGV small multi wmk 1½d red, 2d on 1½d red, 2d red
- 2d Harbour Bridge Typographed
- KGVI 1942 2½d red and 5½d emu

A totally different Tattersalls pattern has been reported, all in upper case and in one line on KGV single wmk 1½d red and 1½d green. Copies have only been recorded with purple ink.



Also found is a similar underprint "TASMANIA". It seems that a larger range of material is available than at first thought. Who used this underprint, and why, is still a matter for conjecture. Any further information would be appreciated.

"OS" OVERPRINT

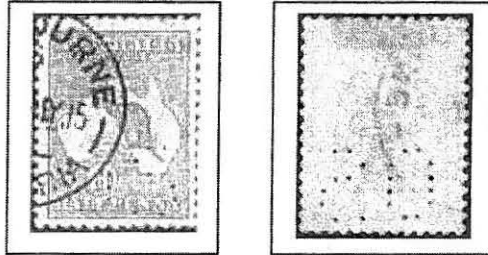
Derek Cowan has come across a very unusual "OS" overprint on a 1/- Large Lyrebird. The large 'O' is clearly seen while the 'S' is partially obscured by the Spencer Street Victoria postmark (1933). Any information about this item would be appreciated.



GRID TYPE "OS"

Another unusual "OS" has turned up, reported by Dan Ryan.

The arrangement of the pattern looks similar to the grid type patterns found on some Victorian issues where the company supplying punctured stamps to a large number of different customers with different sets of initials used a square grid to produce the patterns.



Why a government department would resort to such an arrangement is unknown. Whatever this item is, it certainly can hardly be considered a forgery as it is so different from the real thing that nobody would be fooled..

"AUSTRALIAN OFFICIAL PERFINs" UPDATE

A good range of additional issues and positions of the COFA and C/OF/A perfins on British stamps have been reported. Thanks to Arthur Taylor and John Mathews for these reports.

COFA

Issue	Position	Issue	Position
1902-10 KEVII Defins 2½d blue	7	1924-26 KGV wmk Crown GvR 1d scarlet	6
1912-22 KGV Royal Cypher wmk 1d	3	1924-26 KGV Wmk Crown GvR 3d violet	4
1912-22 KGV Royal Cypher wmk 3d	1,4,6	1924-26 KGV Wmk Crown GvR 4d	4,8
1912-22 KGV Royal Cypher wmk 4d	1,2,3	1924-26 KGV Wmk Crown GvR 6d	6
1912-22 KGV Royal Cypher wmk 6d	4,6	1929 UPU 1d scarlet	6,8
1912-22 KGV Royal Cypher wmk 1-	2,8	1929 UPU 2½d blue	4
1912-22 KGV Royal Cypher wmk 2/6	7	1934-36 KGV Defins Wmk Crown GvR 9d	4,6
1912-22 KGV Royal Cypher wmk 5/-	1	1937-47 KGVI defins 1/-	6

C/OF/A

Issue	Position	Issue	Position
1924-26 KGV Defins 9d green	4,6	1958-65 QEII Defins Multi Cr 4d blue	6
1934-36 KGV Defins 1d scarlet	1	1958-65 QEII Defins Multi Cr 6d purp	4
1936-47 KGVI Defins wmk GVIR 1d scarlet	3	1958-65 QEII Defins Multi Cr 9d grn	2
1941-42 KGVI Wmk Crown GVIR 1½d brown	4,6	1958-65 QEII Defins Multi Cr 2/6	1
1949 UPU 6d purple	4	1965 ITU 9d	8
1949 UPU 1/-	2,4	1965 Lister Centenary 4d Carbolic	4
1950-51 KGVI Defins Wmk Crown GVIR ½d pale orange	4	1967-70 QEII Defins 4d deep sepia	1
1955-60 QEII Defins Tudor Wmk 6d	6	1967-70 QEII Defins 1/- violet	7
1955-60 QEII Defins Tudor Wmk 9d	8	1967-70 QEII Defins 1/6 greenish blue	2
1955 QEII Defins St Edwards Cr 2/6	1	1967-70 QEII Defins 1/9 orange & blk	2
1958-65 QEII Defins Multi Cr 2d brn	8	1967-70 QEII Defins 10/- blue W/P	8
1958-65 QEII Defins Multi Cr 3d purp	4	1967-70 QEII Defins £1 black WP	8

C/OF/A continued

Issue	Position	Issue	Position
1970 High Value definitives 50p ultra	4	1971 QEII Machins 9p yellow orange & black	1,4
1971 QEII Machins 2p green	1	1979 13p Mounted Police Woman	7
1971 QEII Machins 5p pale violet	8		

SWAN RIVER STAMP SHOW SOUVENIRS

The Swan River Stamp Show 2010 was held on 8th and 10th October 2010. As usual among the souvenir covers available were some with the "W(swan)A" perfin. The stamp used for this year's souvenirs was the 60-cent P-stamp.

Exhibition covers with a single P-stamp were serviced for each day of the exhibition and were available @ \$3.50 per cover. While it is too late to order copies for 2010 contact Glen Stafford, SRSS Souvenir Manager, PO Box 1285 Mandurah WA 6210 (email: stafford@southwest.com.au) to be placed on the mailing list for 2011.

AUCTION WATCH

Items of perfin interest from auctions/direct sales since the last Bulletin include the following items. Thanks to Harold Waite, Tony Nobilo, and John Amiet for passing on their spotting of perfin lots in auctions. Stamps are "used" unless otherwise indicated. Prices in A\$ unless indicated. The estimates for the NZ material seem to be on the high side!

			Est.
a.	Used strip of 5 x 6d Engraved Kooka perf DJLTD.2.		
	(Status auction 265, May 10)	unsold at	\$150
b.	10/- Roo, 3 rd wmk, CTO, well centred, "OS".	(eBay, Jun 10)	sold for \$256
c.	Strip of 4 used 1/4d KGV perf small "OS".	(eBay, Jun 10)	sold for US \$ 34
d.	1/- black Vic Centenary perf SG.2.	(eBay, Jun 10)	sold for US \$ 18
e.	MCP.3 on 2/- brown Roo 3 rd wmk.	(eBay, Jun 10)	sold for \$ 10
f.	5/- "Long Tom" perf "SA".	(eBay, Jun 10)	sold for \$ 12
g.	1915 5/- Roo perf "OS".	(eBay, Jun 10)	sold for \$ 67
h.	1939 GB cover of NZ High Commissioner with 1½d brown KGV perf "NZ".	(eBay, Aug 10)	sold for US \$ 62
i.	1941 GB cover of NZ High Commissioner with 2½d blue KGV perf "NZ".	(eBay, Aug 10)	sold for US \$ 36
j.	MUH 2½d Roo 2 nd wmk perf "WA".	(eBay, Aug 10)	sold for \$113
k.	1930 cover of James Moore & Sons Pty Ltd, Melbourne, to USA with 3d blue Sturt perf JM.2.	(eBay, Sep 10)	sold for US \$116
l.	Victoria £1 red KEVII perf "OS", CTO.	(eBay, Sep 10)	sold for US \$ 83
m.	2/- Coronation of E2R perf NFS.1.	(eBay, Aug 10)	sold for \$7.50
n.	5/- Roo perf IHC.14.	(Status auction, Aug 10)	sold for \$375
o.	NZ 2/- QV revenue perf NZ/I/Co	(Complete Stamp Co. Oct 2010)	est NZ\$100
p.	NZ 4/- QV revenue perf NZ/I/Co	(Complete Stamp Co. Oct 2010)	est NZ\$100
q.	NZ 5/- QV revenue perf NZ/I/Co	(Complete Stamp Co. Oct 2010)	est NZ\$100
r.	Proving cover NZ GVI 1d green perf VOC	(Complete Stamp Co. Oct 2010)	est NZ \$250
s.	Proving cover NZ GVI 1d perf MGM	(Complete Stamp Co. Oct 2010)	est NZ \$275
t.	Collection of stamps with NZL and NZ/IC perfins ex Robert Samuel. Fully written up with dates, perfin types etc. 63 stamps + 14 Indian stamps with NZ/IC perfins	(Classic Stamps April 2010)	est NZ \$1000