

SOUTH PACIFIC PERFIN BULLETIN

NO. 85 APRIL 2009

The South Pacific Perfin Bulletin is published by the Perfin Club of New Zealand and Australia four times each year. Club subscriptions (including payment for the Bulletin) are A\$10-00 p.a. for New Zealand and Australian residents and A\$15-00 p.a. for residents of other countries (including airmail postage). Back issues available from the Secretary.

President: Dr Derek Pocock, PO Box 9056, Nicholson Road, Subiaco, Western Australia 6008 Australia

Secretary: John Mathews, 21 McConnel Cres, Kambah ACT 2902, Australia

email – john.mathews@canberra.edu.au

Treasurer & Librarian : David Coath, 4 Fleming Court, Research, Victoria 3095, Australia

email – davidcoath@onthe.net.au

Assistant Treasurer (NZ payments): Richard Smolnicki, 19 Oakleigh Street, Maungaraki, Lower Hutt, 5010
New Zealand

Editor: David Andersen, 260 Hawkesbury Rd, Winmalee NSW 2777, Australia

email- d.andersen@library.usyd.edu.au

Circuit Managers:

New Zealand Ray Bennett, PO Box 354, Timaru, 7940 New Zealand

Australia John Mathews, 21 McConnel Cres, Kambah ACT 2902, Australia

EDITOR'S COMMENT

Over the last couple of months I have encountered a couple of separate groups of forged New South Wales official perfins all from the late 1920s/early 1930s period. That issues from this period are being forged is hardly surprising as there are a number of Kangaroo and KGV issues that are either not known or rare with some of the OS/NSW or G/NSW patterns. Many collectors are interested in these issues and are also willing to pay substantial sums for them. The rare items are indeed hard to come by and you would expect to pay a reasonable price for these. Unfortunately it appears that there are now a number of sources of these forgeries though at present we can't tell when they were created nor how extensive the activities of the forgers have been. However, there is no evidence to suggest that the range of forgeries is as extensive as in the case of the VGs uncovered a few years ago..

We were able to clearly identify these forgeries for a number of reasons, one being that the dies used did not match any of the dies known to exist. The dies of many of these patterns are slightly different and many of the dies are quite easy to pick. To assist in exposing forgeries we need to identify each die in each puncturing head of each pattern. Quite a lot of detailed work is involved but necessary if we are to successfully deal with this problem. More about these forgeries in a future issue.

David Andersen

NEW MEMBERS

We welcome the following new members who have joined since the previous issue:

#255 Ms. Ann Garrick, Windsor NSW

#256 Mr. Donald Adams, Robina Queensland

MELBOURNE STAMPSHOW 09

This National level exhibition will be held from Thursday 23rd to Sunday 26th July 2009. The Club has requested that the exhibition committee offer us a meeting room for a gathering of Club members, preferably on Saturday 25 July. No details of the meeting time have been able to given by the committee at the time this issue of the Bulletin goes to the printer. We will try to get the July Bulletin out prior to the meeting. Members intending to attend the meeting could also watch the Melbourne Stamp Show 2009 web site <http://www.melbournestampshow2009.com/> (or via the Australian Philatelic Federation web site <http://www.apf.org.au/>)

LAUNPEX 2009

Launpex 2009 will be held in Launceston from 30 October to 2 November 2009, and will include a National level one-frame competitive exhibition. Members are strongly encouraged to consider entering a one-frame (15 sheets) display of perfin material. Entries close on 7 August 2009, and the entry fee is \$30 per frame. Details, including Prospectus and Entry Form, are available on the Australian Philatelic Federation website (www.apf.org.au) - click on the "Exhibition Timetable" button at the top of the home page and then on the Launpex 2009 item.

The organizing committee would like to know in advance how many Perfin exhibits might be expected. Could intending exhibitors please indicate so by the end of July to our Secretary (John) to pass on - no details of the exhibit are necessary, just the number of one-frame exhibits.

TIMPEX

The TIMPEX competitive exhibition will be held in Timaru (South Island, New Zealand) from 16 to 18 October 2009. The Club will seek a meeting venue at this exhibition. We hope to be able to announce details in the July 2009 issue of the Bulletin.

ROMANIAN PERFIN CATALOGUE

Thanks to Judy Kennett who has advised that there is now an updated Romanian Perfin catalogue on-line at <http://www.romaniastamps.com/perfin/perfins.htm>. If there are any members who are interested in this catalogue and do not have Internet access, your Secretary can print a copy for you.

DIGITAL MAGNIFIERS FOR SALE

Our Treasurer has some Digital Magnifiers for sale. They connect to your PC via the USB drive, and can photograph images. They come complete with software.

Price: \$90 delivered to you. (They retail for over \$200).

Contact David (address /email on page 1)

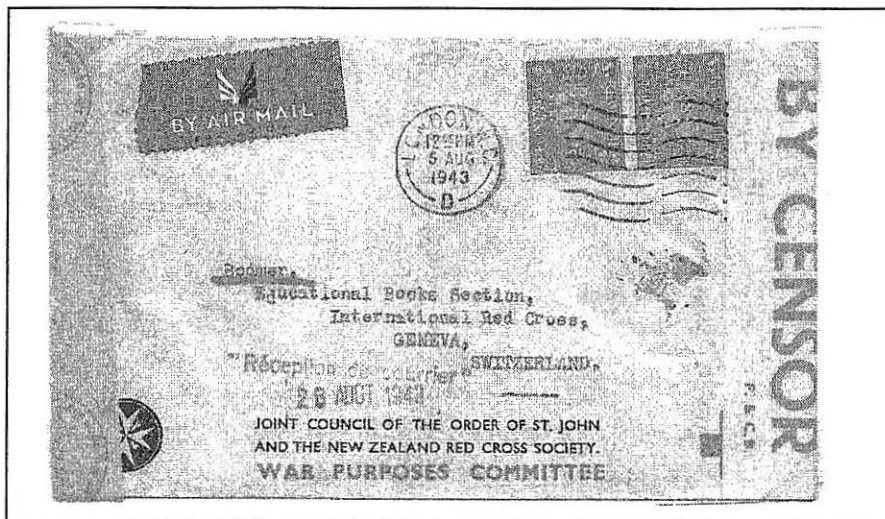
THE NZ PERFINs : an update

Additional information has been provided by Barry Pawson and Harold Waite, the additional issues reported are listed in the table below.

Series	Value	Type 1	Type 2	Type 3	Type 4	Type 5	Type 6	Type 7	Type 8
KGV 1912-26	½d	X							
	1d	X							
	5/-	X							
KGV 1934-36	½d	X							
	2½d	X							
KGV 1937-47	½d		X						
	1d		X						
	2d		X						
	2½d						X		
KGV 1950-51	2d							X	
	2/6							X	
	£1							X	
QEII	½d								X
	1d								X
	1½d								X
	2d								X
	2½d								X
	3d								X
	4½d					X			
	9d								X
2/6								X	

Barry pointed out that as the Type 2 die is believed to have been destroyed in the Blitz so that the two values from the KGV pale colours would be impossible. This is correct and on checking back on the sources used I found that these issues were listed in "G.B. Official Perfins" but, as they have not been reported elsewhere, I do have doubts about these existing. Possibly there was confusion between the Type 2 and Type 7 patterns

Barry also notes that the Type 3 and 4 have not yet been confirmed used by the High Commission and that the Type 5 third value was an H rather than an N. As the Type 5 issues occur on booklet stamps he believes that they are not official issues.



Harold sent some illustrations, two of which are shown in this issue, the first being a nice censored cover used in 1943 with the Type 7 pattern and the second a block of 5/- Seahorses with the Type 1 pattern.



PERFINS OF THE LEVANT

Member Mike Hert is interested to contact other collectors of perfins of the British "Levant", or of perfins on GB stamps overprinted "PIASTRES" and "PARAS".

Mike's email address is mikehert@hotmail.com, and his postal address is P.O. Box 864, Bankstown, NSW, 2200

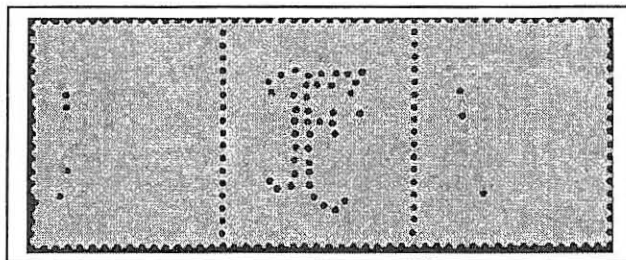
HMAC OVERPRINT

Ian Spencer reports a 1d KGV with an unusual overprint not previously reported. Can anyone provide any information about the user or use or seen anything similar ?



ANOTHER EXAMPLE OF "BLIND PINS" (John Mathews)

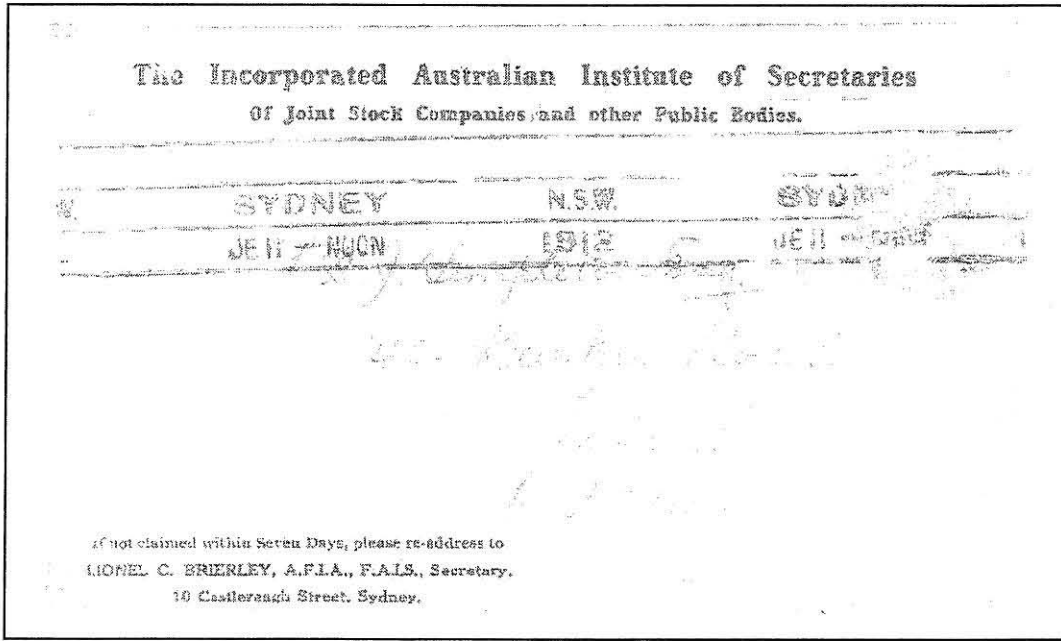
The illustration shows part of an item recently sold on eBay. It is a strip of three 5d brown KGV stamps. The perfin on the central stamp is F.1 (one "blind" pin at the top) and the partially "blind" strikes on the other two stamps are of pattern F.2. The perforator consisted of the two



dies F.1 on the left and F.2 on the right. Obviously these strikes were all done on the same day, yet the sets of clean cut holes and "blind" holes on the two strikes of the die F.2 are quite different. This almost defies a logical explanation in terms of which pins in the die were longer or shorter than others!

ANOTHER "BRIERLEY & BRIERLEY" COVER

Mark Saxby has shown the cover (below) of "The Incorporated Australian Institute of Secretaries of Joint Stock Companies and other Public Bodies" which has a New South Wales ½d green QV with perfin B&B.1. The return address on the envelope is of the Secretary of the Institute, Lionel C. Brierley, who was also a Fellow of the Institute and an Associate of the Federal Institute of Accountants.



In 2007, Harold Waite reported a similar B&B.1 cover (July 2007, page 5) of the Federal Institute of Accountants, with return address of Cecil Brierley, who was a Fellow of that Institute and also its Secretary.

The street address on both covers is the same, 10 Castlereagh Street, Sydney.

The "Handbook of Australian Private Perfins" had 2 possible identities for this pattern, one of which was Brierley and Brierley, Chartered Accountants, 82 Pitt Street, Sydney. The evidence from these two covers gives the first names of the two brothers and provides a confirmation of the identity for B&B.1

WANTED ELECTROLUX INVOICE

Stellan Swenson wants an invoice from Electrolux with a stamp duty stamp overprinted E'Lux. Contact: Stellan Swenson, Odonbärsvägen 32, SE-293 41 Olofström, SWEDEN.

BOSNIAN PERFIN CATALOGUE

Another useful online perfins catalogue is provided by the Bosnian Study Group at <http://mysite.verizon.net/halhite/perfin%20study.htm>. They would appreciate additional information from other collectors to improve this resource.

REGULATIONS FOR THE GUIDANCE OF THE POST OFFICE DEPARTMENT (John Mathews)

While browsing the “Hobart Town Gazette” for 1853 recently, I came across an item under this heading in the issue for Tuesday, October 25, 1853 (and repeated in the next couple of issues) from which I noted the following which may be of interest to members.

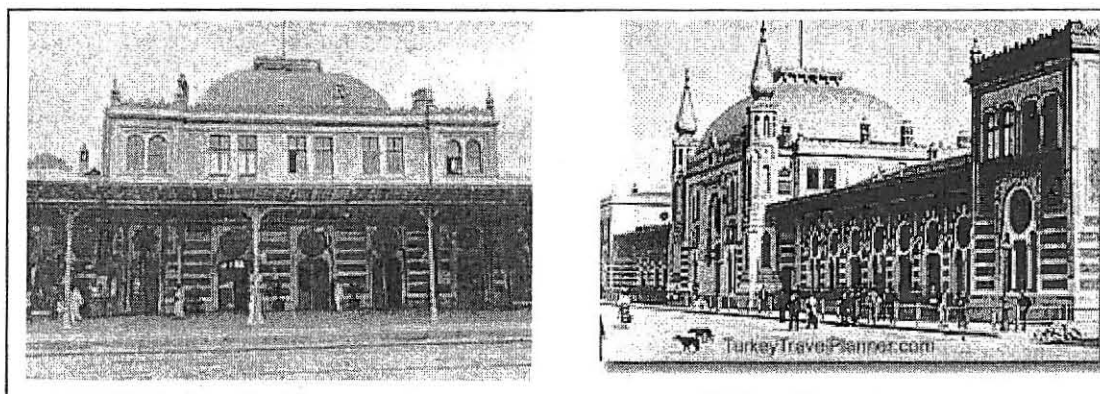
- Opening hours shall be 8.00 am to 8.00 pm. On Sundays, Post Offices shall be open for either 1 hour before Divine Service, or 1 hour after Divine Service, to suit the community.
- Price of stamps
 - Penny stamps - 1d each.
 - Fourpenny stamps - 4d each.
- Postage shall be one penny for letters marked “to be called for”, and for letters for delivery in the same City or Town as posting. Postage shall be 4d for delivery to another part of the Colony.
- Poundage will be paid at a rate of 4 per cent to country Postmasters, and to all purchasers of £5 and upwards.

There was also a long list of officers who were entitled to use franking instead of paid postage.

ISTANBUL TRAIN STATION AND THE ORIENT EXPRESS

In the April 2008 issue of the Bulletin (page 11), we showed a ticket from the Orient Express with puncture “W.L. / 14. 8. 43 / ISTANBUL GAL”. The “W.L.” were the initials of the Wagons-Lits company which ran the sleeper cars on the Orient Express, and “14.8.[19]43” was obviously the date, but the “GAL” part of the destination Istanbul Station name had been a mystery.

Now member Paul Butler has provided information which should solve the mystery. The terminus station of the Orient Express is now known as Sirkeci Gari. It is only 500 metres from the Galata Bridge, on the northern side of which is the old district of Galata where many passengers on the Orient Express stayed while in Istanbul.



Two views of the Istanbul Railway Station as it appeared in the 19th Century

NEW ZEALAND PERFIN LITERATURE

Member Allan Berry writes:

“May I refer you to page two of the latest issue of South Pacific Perfin Bulletin. In your comments about Tarapex 2008, fourth paragraph, you refer to "Allan Berry's handbook". I presume that you mean "New Zealand and Dependencies - A Philatelic Bibliography". If this is the case, then to refer to it as MY handbook is wrong - you are omitting the others who assisted in its compilation - David R. Beech, Curator, Philatelic Collections at the British Library, and Robin M. Startup, recently invited to sign the Roll of Distinguished Philatelists, and a pioneer in the study of New Zealand perfins. I would greatly appreciate it if you would point this out in your next issue. Incidentally, copies of the Bibliography are still available. If any of your readers are interested in obtaining a copy, please ask them to contact me through my email address which appears at the end of this message. I think it might also interest your readers to know what items we have listed that refer to New Zealand perfins, even though they may not give the information you are seeking. I therefore give them below:

Dell, David. A New Zealand Perfin Collection. David Dell, Upper Hutt, 1993, no pagination, illustrated, ISBN 0-473-02003-3.

Mansfield, Tony. Unofficial Overprints & Perfins on New Zealand Miniature Sheets. Tony Mansfield, Auckland, July 2000, 57 pages, illustrated. ISBN 0-473-06982-2. Two versions - one colour print, one black and white.

Samuel, R.D. New Zealand Stamps With Perforated Initials. The Postal History Society of New Zealand Inc, Auckland, 1968, 52 pages, illustrated. [Society Handbook No. 5].

Samuel, R.D. An Exhibition Display of New Zealand Stamps with Perforated Initials. Shades Stamp Shop Limited with the Assistance of Philatelic Foundation Christchurch Inc, Christchurch, 1994, paginated in sections, illustrated.

Startup, R.M. Perforated Insignia on New Zealand Stamps (Perfins). The Perfins Club, Wayne, Pennsylvania, [USA], 1959, 8 pages

Startup, R.M. New Zealand Stamps Perforated with Initials and Numbers. R.M. Startup, Masterton, 1958, 16 pages. Pioneer list of New Zealand Perfins usage circulated to interested collectors for additions and corrections.(Copies in RPSNZ and RMS Libraries).

The Tasman Catalogue of New Zealand "Perfins" (Stamps with Perforated initials).[Laurie Franks Ltd], Christchurch, 1970, no pagination, illustrated. Additions published in The Mail Coach, Volume 5 number 9, May 1969, pages 168 - 169.”

Our apologies for this error. Allan can be contacted by mail: Allan P. Berry, 238, Waikiekie Road, Thames 3500, New Zealand, or by email apberry@wave.co.nz

FINNEY, ISLES AND COMPANY (John Mathews)

Thomas Finney and James Isles were two friends from Ireland who emigrated to Queensland in the "Flying Cloud" in 1862. Thomas Finney had been born in Tuam, County Galway on 10 January 1837, the son of a "gentleman". He was educated by a "private tutor".

They settled in Fortitude Valley, then only connected to Brisbane by a dirt track, and in December 1864 took over the drapery business (including the two staff) of Merry

and Bush in Ann Street on the death of Mr. Bush. They renamed the business as "Finney, Isles and Company". Mrs. Isles also worked in the store, attending to the ladies wear section.



Thomas Finney



James Isles

As business increased, they decided to open another shop, and in June 1870 they began trading in Brisbane at the corner of Queen and Edward Streets. This was an old one storey premises which had been used as a warehouse. They altered the front portion so that it had display windows suitable for a retail shop. It also had a two-storey building adjacent in Edward Street and at the rear. At first they were tenants in these premises, but in 1873 they bought them. They also opened branches in the country towns of Rockhampton and Gympie.

In 1884, they opened a new three storey building which housed departments for furniture, carpet and linoleum. James Isles died just after they opened a further store in 1888.

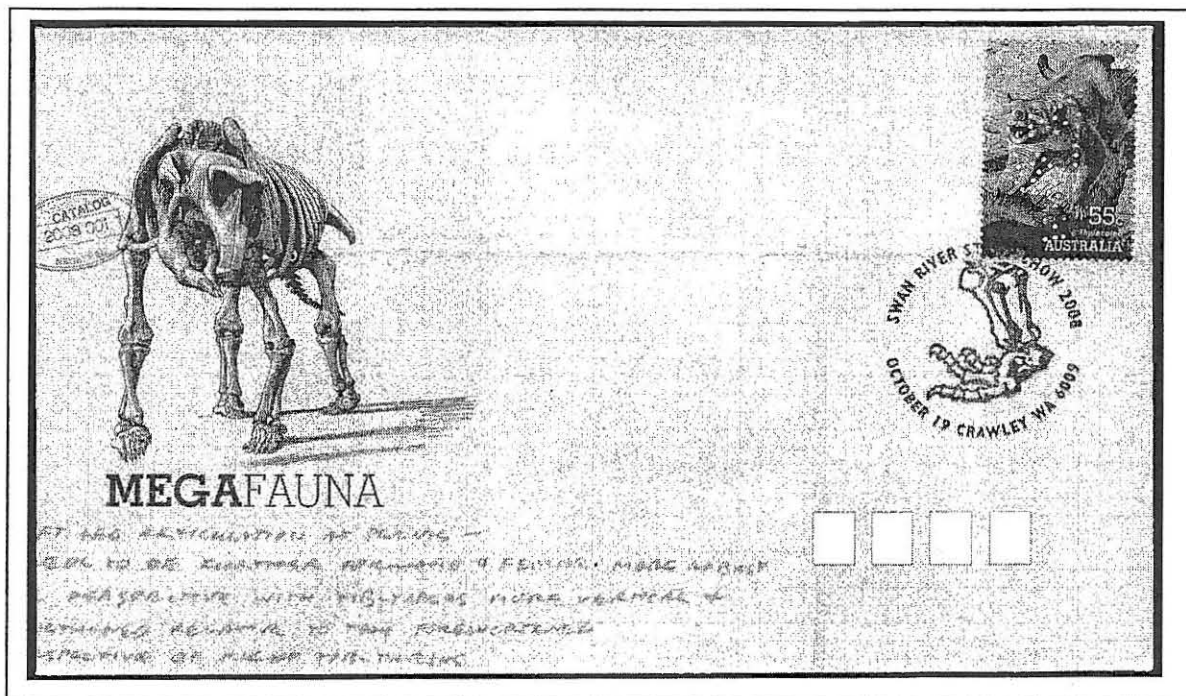
There was an old creek flowing from a lagoon, where King George Square now is, and under the middle of Finney's building. The creek bed had never been filled in because they found it useful for the delivery trucks to drive down the sloping bank and along the creek bed to gain access to the basement! However, in the famous 1893 flood, the Brisbane River backed up along this creek and inundated the lower levels of buildings in the area. A photo taken during the flood shows water half way up the display windows of Finney's store on the corner of Queen Street.

Finney's became a Limited Liability company in 1904, although it remained a "co-operative" in nature as the staff had shares in the company. It continued to expand before and after World War I, and became a true Brisbane icon. It was taken over by David Jones Limited in July 1955.



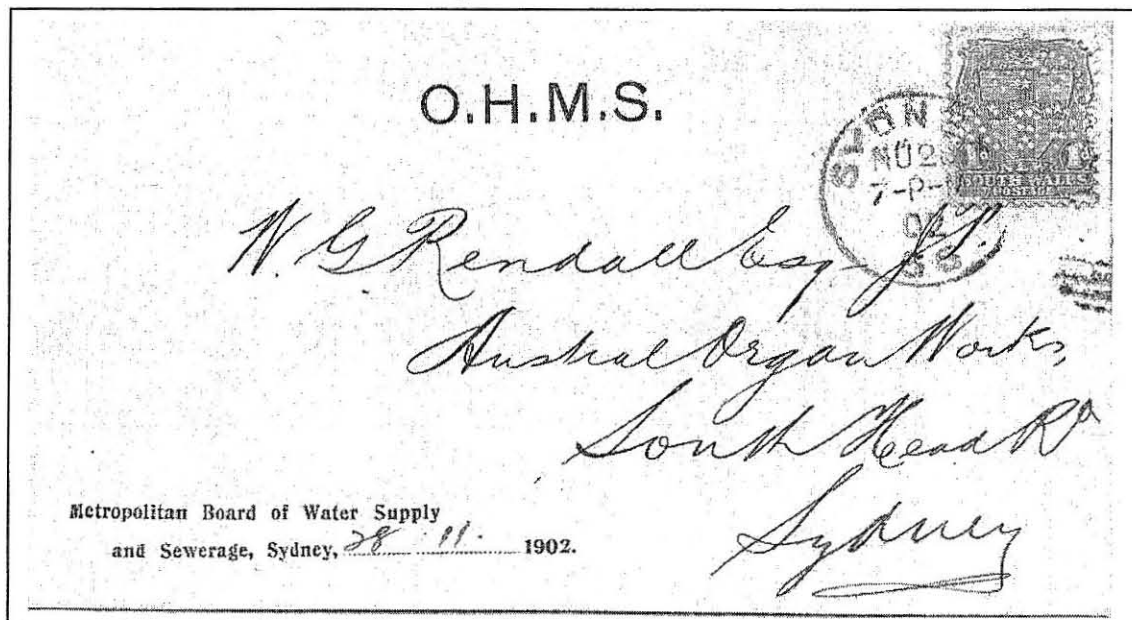
SWAN RIVER STAMP SHOW SUPPORTERS CLUB

As usual W(swan)A perfins were used to produce souvenir covers at the last Swan River Stamp Show, October 18 and 19 2008. Two standard covers were available with the usual P-stamps. At a recent Petersham Stamp Show, one dealer had a couple of covers issued for the Supporters Club in 2008. Both of these had a Megafauna stamp which related well with the postmarks used at the exhibition. One of the covers is illustrated below. Other covers for the Supporters Club have presumably been issued in previous years.



OS/NSW TYPE A - EARLIER DATE

Frank Hermsen reports a letter card with the OS/NSW Type A pattern dated 28-11-1902, two weeks earlier than the previous earliest recorded date of 10-12-1902.



AUSTRALIAN OFFICIAL PERFINs UPDATE

Thank you to Ken Moore, Arthur Taylor, David Coath and John Mathews for the following reports.

Victoria OS Type F 1905-13 Wmk Crown/A 5/- Position 2

Great Britain C/OF/A 1949 UPU 1/- Position 2

News South Wales 1897 re-issue of 5/- perf 12 Position 1 double OS

Queensland SEA Adhesive Duty 8th series 1/- Position 6

Commonwealth Issues

G/NSW Type B 1949-56 Zoological 1/2d Kangaroo No wmk Position 4

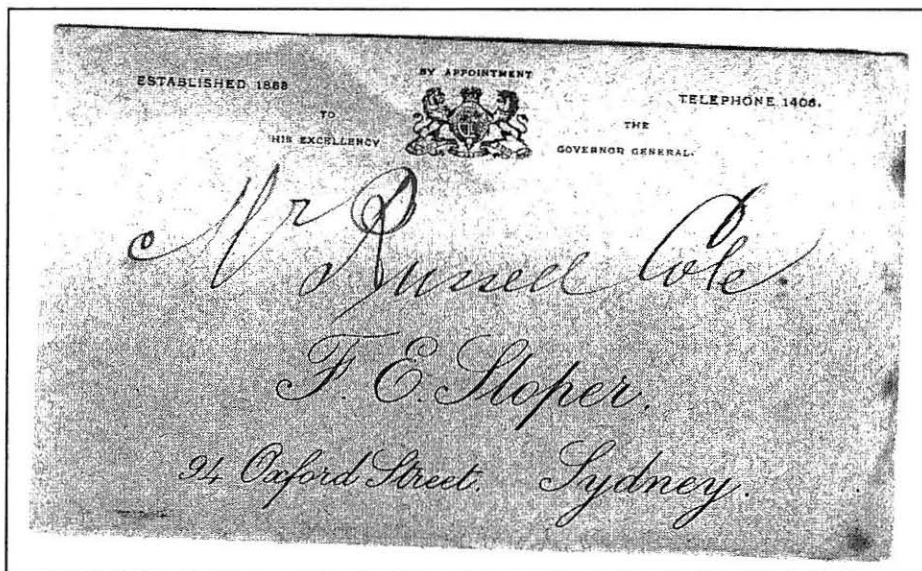
G/NSW Type D \$1 Flinders Position 5

G/NSW Type D 1975 Environment 10c Bushfire Position 2

ANOTHER "SLOPER", BUT NOT A PERFORATOR OF STAMPS

(John Mathews)

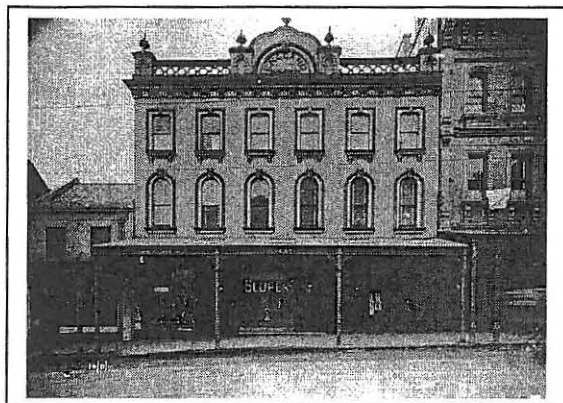
Brian Fuller sent me the illustration shown of an envelope, and asked who the named people were.



When I looked in the Sydney Telephone Directory for July 1900 (such a low number - it had to be early!), I found an entry for "1406 Sloper, Chemist, Oxford Street". The Sands' Sydney of 1901 confirmed that Frederick E. Sloper was a chemist at 94 Oxford Street. His private residence was "Widcombe", Sloper Avenue, Kensington, from where he used to ride through Centennial Park to work on his tricycle (see illustrations below).

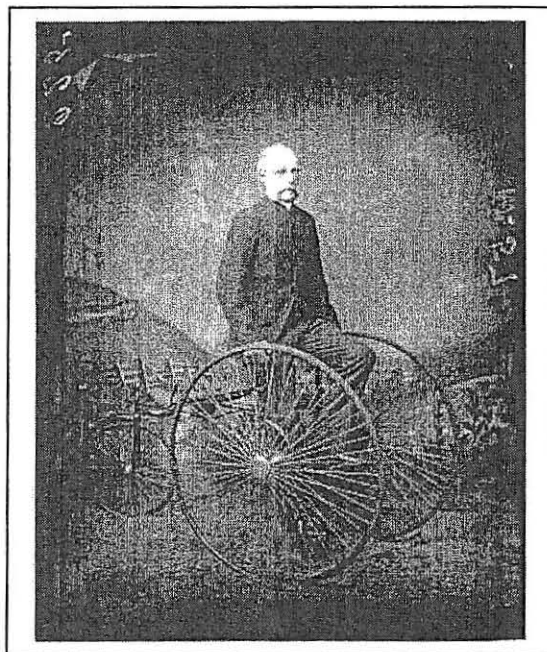
I was not able to find any references to Mr. Russell Cole. However, from the style of envelope, I presume that it was not intended for postal purposes but rather be one in which a prescription might be placed.

Frederick Evans Sloper was a member of the British Pharmaceutical Society, and arrived in Sydney via Port Phillip (Melbourne) in 1853. He immediately opened a shop in William Street. He was a lobbyist for a Pharmaceutical Society in New South Wales, which was set up in 1876. In the 1880s he opened a pharmacy at 94 Oxford Street which he owned until his death in 1903.



Above: Frederick Sloper's Pharmacy at 94 Oxford Street, Sydney.

Right: Frederick Sloper on his tricycle (studio portrait - note top corner of canvas backdrop is peeling off!)



AUCTION WATCH

Items of perfin interest from auctions/direct sales since the last Bulletin include the following. Thanks to Tony Nobile, Harold Waite, John Amiet, David Coath and Bryan Magee, for passing on their spotting of perfin lots in auctions. Prices in A\$ unless indicated.

			Est.
a.	Victoria. £2 KEVII dull blue perf "OS", CTO.	(Phoenix auction, Mar 09)	\$ 300
b.	Victoria. £1 KEVII carmine-rose perf "OS", CTO.	(Phoenix auction, Mar 09)	\$ 150
c.	Victoria. 108 share transfer documents with Stamp Duty issues with perfins of share-brokers, 'C', 'O&M', 'M&B'.	(Phoenix auction, Mar 09)	\$2,000
d.	10/- Roo perf "OS". One short perf.	(eBay, Jan 09)	sold for US \$ 32
e.	1922 cover of Birt & Co Ltd, Sydney, to Sweden, with 2 x 4d blue KGV perf BCL.6.	(eBay, Feb 09)	sold for GBP 40
f.	WA 4d pale blue imperforate Swan with Commissariat punch.	(eBay, Feb 09)	sold for US \$ 63
g.	1966 cover of University of NSW to USA with 2/- Flannel Flower perf UNSW.1.	(eBay, Feb 09)	sold for US \$ 96
h.	Victoria. £1 KEVII carmine-rose perf "OS", CTO. [diff to item b. above]	(eBay, Feb 09)	unsold at US \$149
i.	Victoria. £2 KEVII dull blue perf "OS", CTO. . [diff to item a. above]	(eBay, Feb 09)	unsold at US \$299
j.	1928 cover of Jno. Reid & Sons Ltd, Adelaide, to USA with 3d Roo.perf JRSA.1 and 2 x 1d red KGV.	(eBay, Feb 09)	sold for US \$ 52
k.	1927 Queensland 2/6 yellow & blue Railway Parcel Stamp perf K.3.	(eBay, Jan 09)	sold for GBP 18+
l.	Laurie Franks' Catalogue of NZ perfins (1970).	(eBay, Apr 09)	sold for \$ 19+
m.	NZ 1901 1d Universal perf GNB/LD	(David Holmes Jan 09)	sold for NZ \$70
n.	NZ 1946 Health 2d + 1d perf RI/Co/LD	(David Holmes Jan 09)	sold for NZ \$50
o.	NZ 1909 1d Dominion perf BG/EC	(David Holmes Jan 09)	sold for NZ \$45