

# SOUTH PACIFIC PERFIN BULLETIN

NO. 82 JULY 2008

The South Pacific Perfin Bulletin is published by the Perfin Club of New Zealand and Australia four times each year. Club subscriptions (including payment for the Bulletin) are A \$10-00 p.a. for New Zealand and Australian residents and A \$15-00 p.a. for residents of other countries (including airmail postage). Back issues available from Secretary.

---

President: Dr Derek Pocock,, PO Box 670, Subiaco. Western Australia 6904 Australia

Secretary: John Mathews, 21 McConnel Cres, Kambah ACT 2902, Australia  
email – john.mathews@canberra.edu.au

Treasurer & Librarian : David Coath, 4 Fleming Court, Research, Victoria 3095,Australia  
Email – davidcoath@onthe.net.au

Assistant Treasurer (NZ payments):Richard Smolnicki,19 Oakleigh Street, Maungaraki, Lower Hutt,5010 New Zealand

Editor: David Andersen, 260 Hawkesbury Rd, Winmalee NSW 2777, Australia  
email- d.andersen@library.usyd.edu.au

Circuit Managers:

New Zealand Ray Bennett, PO Box 354, Timaru, 7940 Zealand

Australia John Mathews, 21 McConnel Cres, Kambah ACT 2902, Australia

---

## EDITOR'S COMMENT

One of the really frustrating things I find with eBay and similar online auction sites is that we can see so many nice items on offer but as there are likely to be more than one collector interested in a particular lot or area one cannot win them all. Sometimes the price goes too high and other times you don't even see the lot because the search term you were using doesn't find some of the items of interest. Quite often I see lots mentioned in Auction Watch that I hadn't noticed but would have been interested in. At least we have a better idea of what is around and can hope that further copies surface in due course and they often do.

My idea of collecting has always been to get a fair amount of collecting for a modest outlay. When prices go too high or it gets difficult to find new material in an area I will broaden the range of what I collect. My most recent broadening was into US and Canadian precancels. Some perfins also have precancels so why not go a bit further in that direction. Some US pre-cancels are also printed with the initials of the company that used them. This was to prevent reuse by the companies involved, pre-cancels not being postmarked. Pre-cancels also show genuine commercial usage like perfins.

However the moral of the story is the need occasionally to widen the scope of what one collects to ensure collecting remains an enjoyable and affordable pastime. After all we collect for pleasure, challenge and stimulation.

---

## NEW MEMBERS

We welcome the following new members who have joined since the previous issue:

- #246 Mr Bill Eppelstun, Eugowra, NSW
- #247 Mr Don Woodward, Shepparton Vic
- #248 Mr Arnold Knudson, Seatac, WA, USA

## AUCTION 1/2008

It was good to see some of our new members bidding (successfully!) in this auction. Overall, bidding was again strong, early and across all collecting interests. This auction saw a "first" - all bidders won at least one lot, and all vendors who submitted new material for this auction sold at least one lot! Results are enclosed with this Bulletin.

## AUCTION 2/2008

This is a special auction which is comprised of the perfin part of a philatelic collection from a deceased estate. The reserve prices have deliberately been set low to ensure that the material sells first time offered. It is expected that most lots will sell for much more than the reserve. Please note the closing date on the enclosed catalogue.

## FINANCIAL STATEMENTS - PERFIN CLUB OF NEW ZEALAND AND AUSTRALIA

Statement of Receipts and expenditure for the year ended 30 June 2008 (New Zealand account).

<u>Receipts</u> (NZ\$)		<u>Expenditure</u> (NZ\$)	
Bank Balance 1.7.2007	286.21	Auction vendors	451.00
Circuit book sales	1759.50	Transfer to Aust. A/c	2044.09
Subscriptions	343.75	Exhibition donation	150.00
Interest	18.65		
Auctions	450.00		
Handbook sales	178.00	Bank balance 30.6.08	391.02
	-----		-----
Total	3036.11	Total	3036.11

Our thanks to Richard Smolnicki for his good work in managing our NZ account, and also to Ray Bennett for his good work in managing the exchange books' NZ circuit.

The financial statement for the Australian account will appear in the October 2008 issue of this Bulletin.

## CREDIT CARD PAYMENTS

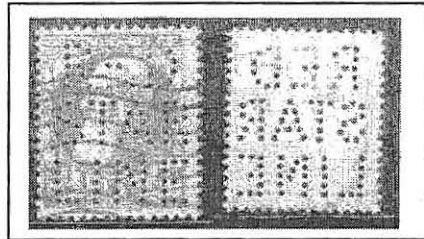
Your Secretary used to be able to process credit card transactions through a friend's business. However, that business has now closed and this facility is no longer available (at least until I can find a replacement). In the meantime, there are alternatives. For Australian and New Zealand members, a personal cheque is the preferred option. For other overseas members, we are aware of high bank charges in all countries. For small amounts, Australian banknotes may be sent if available and if considered safe through your postal system (suggestion is to wrap them in dark paper). Cheques or PayPal may also be an option, but please always check in advance with the Secretary to confirm either of these. Remember, the Club does NOT have foreign currency accounts.

## TARAPEX 2008

The TARAPEX 2008 New Zealand National Exhibition will be held from 7 to 9 November in New Plymouth at the TSB Stadium, Mason Drive. The committee has kindly booked the main meeting room on Saturday 8 November from 1pm to 2pm for a meeting of Perfin Club members. You are all welcome to come along, bring along any favourite perfin items you might like to show to others and join in a general discussion on our favourite topic!

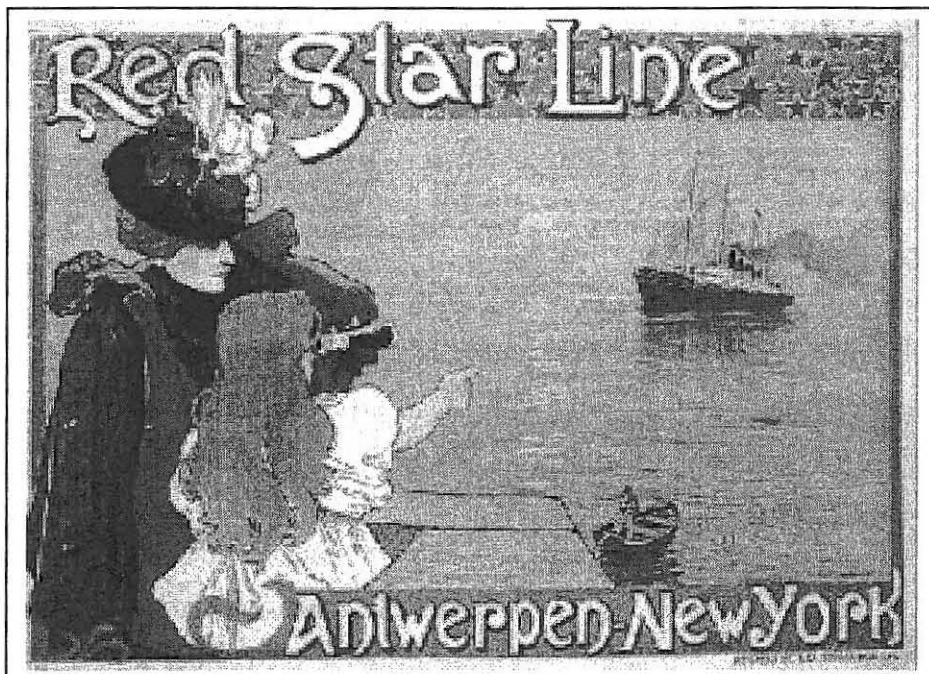
## “RED STAR LINE” PERFIN

Doug Brookson has shown a perfin of Belgium which is interesting from a couple of aspects. First, the GB postal authorities originally objected to the overprinting of company names on stamps as a security measure because they regarded it as being interpreted as “advertising”.



Second, this full-name perfin covers almost the entire stamp area, and this would also have been frowned upon by many postal authorities.

Doug adds the following information about the Red Star Line. “The company was founded in 1871 from Philadelphia, USA. In 1872, a subsidiary company was formed in Antwerp, Belgium, and known as ‘Societe Anonyme de Navigation Belge-Americaine’. The main ports of call were New York City and Philadelphia in the United States and Antwerp in Belgium. On 19 January 1873, a weekly service between Philadelphia and Antwerp began, until it merged with IMM Co [International Mercantile Marine Co]. The company operated until 1934 when, due to economic depression, they ceased trading.”

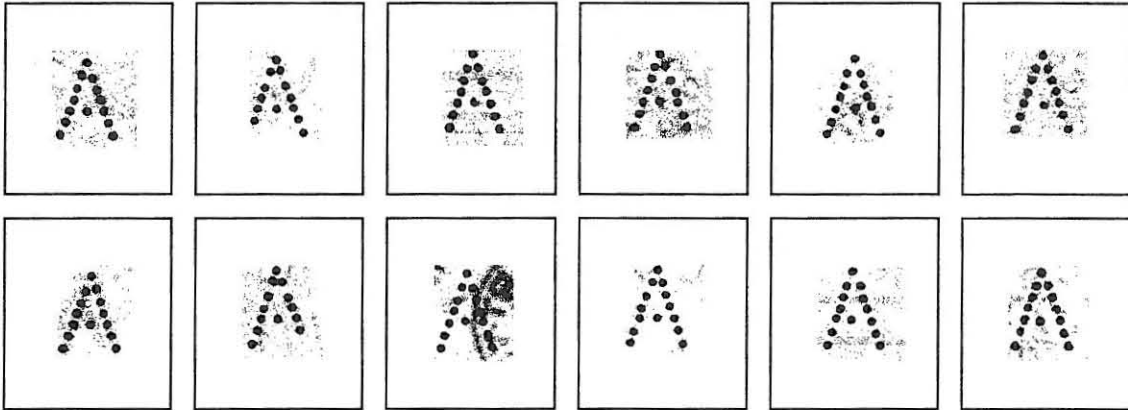


Poster of the Red Star Line (source: [www.theshipslist.com/ships/lines/redstar.html](http://www.theshipslist.com/ships/lines/redstar.html))

PATTERNS A.3, A.4 AND A.5 – THE ENIGMA SOLVED? (John Mathews)

David Coath and Bill Harley have combined to do some good research into these patterns. For a long time, it had been realized that the date ranges for the patterns listed as A.3 and A.4 had overlapped considerably. In addition, there had been no further confirmation for the initial report of pattern A.5.

As result of David's and Bill's research, it is now confirmed that A.4 is really one of six varieties of pattern A.3. These are shown below, with reversed images as well. It appears the sheets were folded, as both orientations of each variety are found.



Variety #1

#2

#3

#4

#5

#6

Major distinguishing characteristics of each pattern are:

1. Second row slopes; cross-arm straight/horizontal; one leg shorter.
2. Second row slopes; large gap between second and third rows; missing pin at foot of one leg.
3. Second row horizontal; cross-arm bows slightly upwards.
4. Second row horizontal; square "hip" at one end of cross-arm.
5. Second row horizontal; cross-arm straight but sloping slightly.
6. Second row horizontal; cross-arm bows slightly downwards.

Date ranges reported so far for the six varieties are:

Variety	Earliest	Latest
1	16 August 1899	1 March 1900
2	21 July 1899	5 February 1900
3	4 October 1899	19 January 1900
4	22 July 1899	4 December 1899
5	25 August 1899	30 December 1899
6	25 August 1899	30 December 1899
Unknown	2 July 1899	July 1900

Pattern A.5 has been confirmed as an example of variety #2 – it is now realized that the bottom pin of the longer leg was actually off the edge of the stamp!

The next phase of this research will be to determine the relative positions of these six varieties as the six dies of a multiple punch head. For this, blocks and horizontal strips of stamps with this pattern are required and these are proving to be elusive, so if

any reader has any such multiples, it would be appreciated if photocopies or scans of the reverse of the stamps could be sent (by post/ email respectively) to the Secretary.

---

#### A USEFUL REFERENCE FOR PERFIN COLLECTORS (John Mathews)

On a recent weekend trip to Albury, I also visited some historic towns in northern Victoria which I had not seen since they were on the old Hume Highway many years ago. For me, the lure includes browsing second-hand shops (in the hope of finding old perforators!), and in one such shop in Chiltern there was a table of old books. Among several Enid Blyton's children's story books, there was a copy of the Post Office Guide, number 39, 1946 – all 840 pages of it - in very good condition, except for a missing back cover, and including pen and ink amendments and other amendments pasted in covering up to the end of 1948.

Article 379 is headed "Perforation of Postage Stamps" and reads "Any person, with the permission in writing of the Deputy Director, may perforate postage stamps with such letters, figures, or design as are approved, and stamps so perforated will not be considered to be defaced, and will be accepted in payment of any postage fees or dues and telegraph fees, but no stamps so perforated will be purchased or exchanged by the Department."

There are many other useful items of interest to perfin collectors. Article 323 relates to customs duty on advertising matter being sent to Australia. Sub-paragraph (2)(a) states that duty may be paid at the Commonwealth Offices in London, or at the office of the Australian Customs Representative in New York, where adhesive stamps will be sold for attachment to the postal matter to indicate duty that has been paid. Some firms in UK and USA perforated these Customs Duty stamps.

There are also 130 pages of Registered Telegraphic Addresses of companies around Australia and includes their postal addresses as well. Many in this list were perfin users, and it is a source of finding "possible users" from partial names and/or addresses from pieces of envelopes.

There is also a complete list of Post and Telegraph offices including Military and Air Force Post Offices. One interesting entry (to me, at least) is "Adelaide Oval" stated to be "opened on special occasions only".

---

#### PROTECTING HAGNERS - AN UPDATE

Following my comment in the last Bulletin, Gordon Monk had the following suggestion "I use 'Marbig' A4 heavy duty ultra clear A4 sheet protectors. I have an email from Justine Metcalf at Marbig stating they are an archival product. They cost \$11 for a box of 50 sheets at 'Office Works'. You can put two single sided Hagnes sheets into a pocket."

Thank you Gordon for this information, it is very useful to hear of the archival quality of the sheet protectors as I'm sure many of us have a number of uses for this type of product.

## MEET THE MEMBERS

We do not necessarily wish to set a precedent ☺ but the following photo shows member Dingle Smith (on behalf of the Canberra StampShow 2008 committee) presenting member Dave Elsmore (right) with his prize at the awards dinner.



## ANOTHER “PERFIN” FROM CANADA POST (John Mathews)

In February 2007, Canada Post issued two stamps for International Polar Year as a tenant pair. In the centre of the perforations between the stamps, there was a punch in the shape of their national emblem, the Maple Leaf.

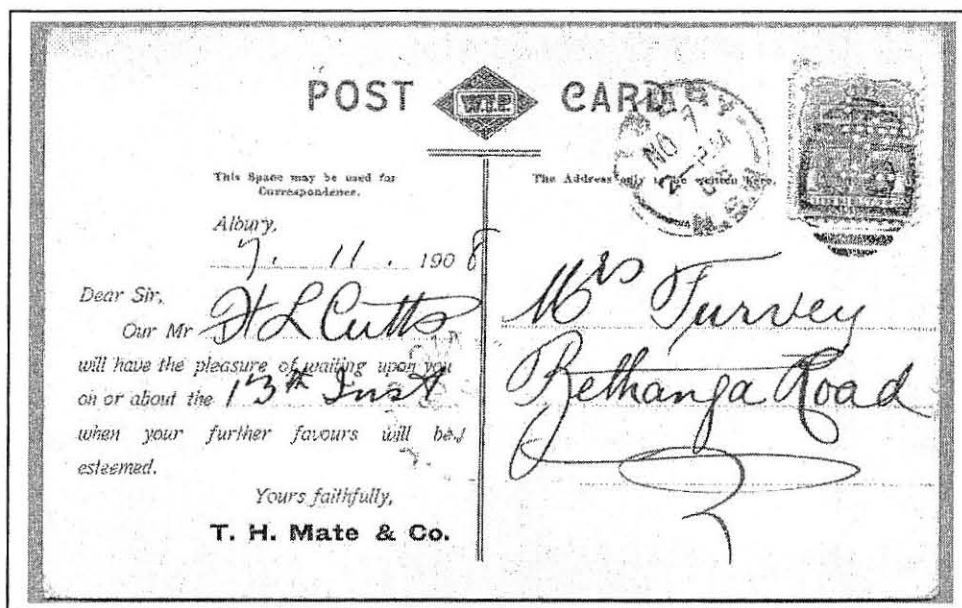
Recently, I bought an eBay item (perfin) from a vendor in Canada, who kindly used a pair of these among a selection for postage. To my surprise, there was a larger Maple Leaf punch in the selvedge of this pair, and in the selvedge of one of the other stamps which he used. He tells me that this larger punch was applied by himself, and that the punch is a craft punch which he also bought on eBay, from a Hong Kong stationery company.



### T. H. MATE & COMPANY (John Mathews)

Thomas Hodges Mate was born on 5 April 1810 at Canterbury, England, son of Thomas and Amelia Mate. At age 23 years, he migrated to Sydney where he stayed for some months and then moved to the country to gain pastoral experience. On 8 February 1836 at St James's Church, Sydney, he married Maria Bardwell.

Mate bought a few sheep and in 1837 took up a run on Tarcutta Creek in southern New South Wales. His primitive homestead was half-way on the track between Sydney and Melbourne so he added an inn and store for travellers. Though the Aborigines were then very numerous, he avoided conflict by his kindness and faithful promises. By 1849, the Tarcutta school had sixteen children, four of them Mate's, and the station was well stocked with sheep and cattle. In 1850, he decided to open a general store at Albury, which became known as "Mate's Emporium". The town was then very small but it grew rapidly after gold was discovered and river transport was opened. As his emporium prospered, he expanded as a wholesaler and had a bonded store. At first his store housed the post office and after 1858 a telegraph office but both moved to other premises in 1862.

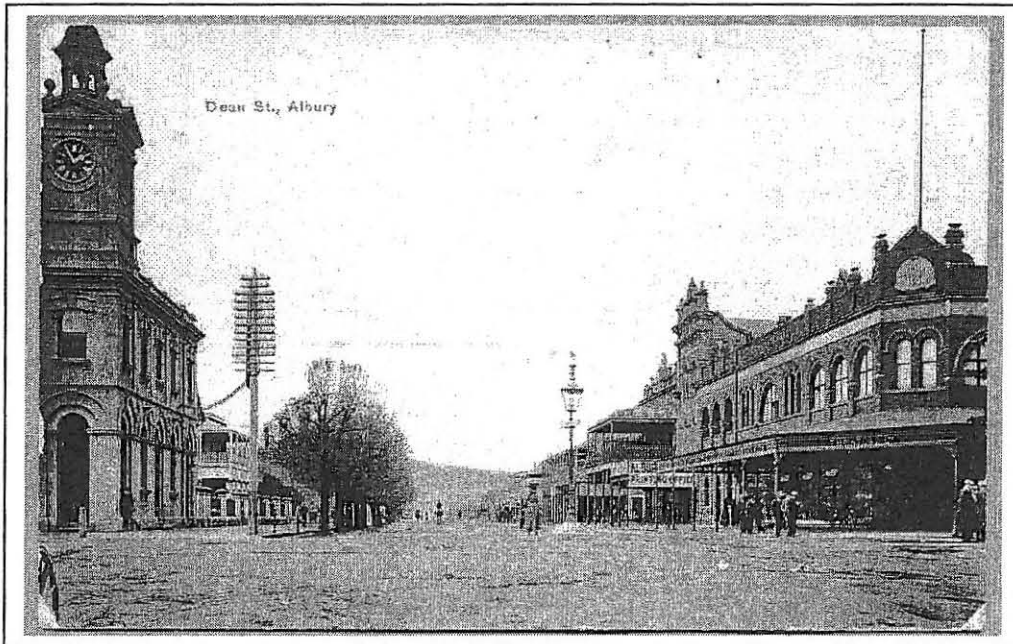


Trade card used 1908 by T. H. Mate & Co. bearing perfin ME.1

Prominent in Albury's growth, Mate served on the Albury Hospital Committee and chaired a banquet to celebrate the opening of the bridge across the Murray on 2 September 1861. In 1859 he had contested the Hume electorate as a squatters' candidate holding land on the Murrumbidgee and near Albury as well as Tarcutta. He was beaten by three votes chiefly because floods prevented many country electors from voting. He won the seat in December 1860 and held it until November 1869. He was gazetted a magistrate of the territory.

From 1864, Mate was involved in much litigation, mostly over land. His major holdings were Kulki near Urana and the Tumberumba and Brae's Springs runs near Albury and Tarcutta, which were managed by his sons. His store continued to expand and, as mayor in November 1880, he was chosen to open the Albury market yards which soon attracted store cattle from all south-eastern Australia, especially after Victoria raised its stock tax. Predeceased by his first wife in 1875, Mate died at Manly from pneumonia on 22 July 1894 and was buried in the Anglican section of Waverley cemetery. He was survived by his second wife Florence, née Brown, whom he had

married at Albury in 1882, and by three sons and four daughters of the first marriage and one daughter of the second. His probate was sworn at over £13,000.



Above: Picture side of the 1908 trade card of T. H. Mate, showing Mate's Emporium on the right corner and the Post Office on the left corner.

Below: The same view in 2008. Mate's Store closed in 1987, but the building still bears the name.



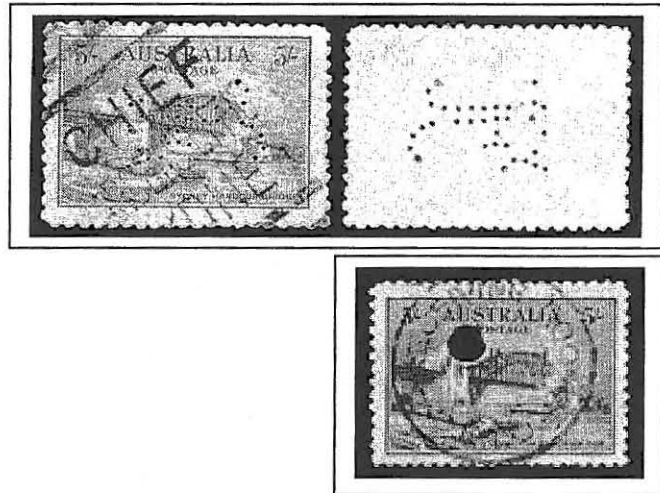
Today, his building still stands on the corner of Dean and Kiewa Streets, opposite the Post Office. On the outside it still looks much the same as it did 100 years ago, but the inside has changed. Although Mate's Stores closed in 1987, the building still bears the name "Mate's Centre" and is subdivided into several small specialty shops, in at least one of which (the one I went into to make enquiries about Mate's



Emporium!), the bare wooden floorboards are still there. The section of the Hume Highway through North Albury is known locally as "Mate Street".

#### ANOTHER PERFIN ON A RAILWAYS PARCEL STAMP ...

The item shown at left below is a 6d orange Western Australia Govt. Railways parcel stamp with perfin GDM.1. It sold on eBay in May 2008 for £10.30.



... and ANOTHER SALE OF A 5/- SHB WITH PERFIN

The two items with 5/- Sydney Harbour Bridge stamps shown above right were sold in the Prestige Philately auction on 24 May 2008. The perfin F.1 was part of a selection of 12 SHB stamps (the others were all 2d or 3d denominations!) and this lot sold for \$1,400. The Telegraph Puncture stamp sold for \$750. The vendor had bought the F.1 perfin from a Rodney Perry auction in 2000 and both items became part of a Gold-medal winning exhibit of the Sydney Harbour Bridge issue.

#### AUSTRALIAN OFFICIAL PERFINS: AN UPDATE

A few reports of new items have started to trickle in and a few new items have turned up at auction recently. A few of these are noted below with thanks to David Coath and Arthur Taylor. More in a future issue.

##### G/NSW Type C

1938 5/- Robes thick paper Position 1

##### G/NSW Type D

1949 £1 Arms Position 2

1963 2/3 ICY Position 2

1966 \$2 Navigator Positions 3,5

##### U/NSW

1959-62 6d Anteater Position 2

1959 QEII defin brown Position 4

1966 1c QEII brown Position 4

1966 2c QEII green Position 1

1966 20c Golden Whistler Position 1

1974 5c Education multi Position 2

Copies of "Australian Official Perfins" are still available from John Mathews. Details in the October 2007 Bulletin.

GB STAMPS PERFORATED "C/OF/A" – No. 1 AUSTRALIAN AUXILIARY  
HOSPITAL, HAREFIELD PARK, ENGLAND (John Mathews)

In the January 1999 issue of this Bulletin (page 6), I wrote of "The Australian Military Hospital" at Harefield Park, England, from where Australian soldiers used stamps perforated "C/of/A". I have now found, at the Australian War Memorial in Canberra, files from that Hospital with some further interesting information re its history and postal services.

The medical unit destined for the No. 1 Australian Auxiliary Hospital at Harefield Park embarked from Australia in February 1915 in Transport A54. The group consisted of Captain M. V. Southey, AAMC, 1 sergeant, 1 lance-corporal, and 3 privates. Matron Grey and 5 nurses travelled on another ship. Captain Southey and his unit landed at Suez in Egypt and proceeded to Cairo where the unit was attached to No. 1 Australian General Hospital at Heliopolis. They left Egypt about the middle of May via Port Said by passenger ship to Liverpool, thence to London.

The hospital at Harefield Park was originally intended to be a Convalescent Home for wounded soldiers discharged from hospitals until they could either return to the Front or be repatriated home. However, it was upgraded to an Auxiliary Hospital for its opening on 4 June 1915. The first group of 70 patients arrived by train to Denham Station (2 km south of Harefield) in the first week of June and were admitted even before the buildings were completed. Another 100 arrived about a week later.

The historical notes in the preceding two paragraphs were written by Major Southey on 14 October 1918 for the Army Records Section [1].

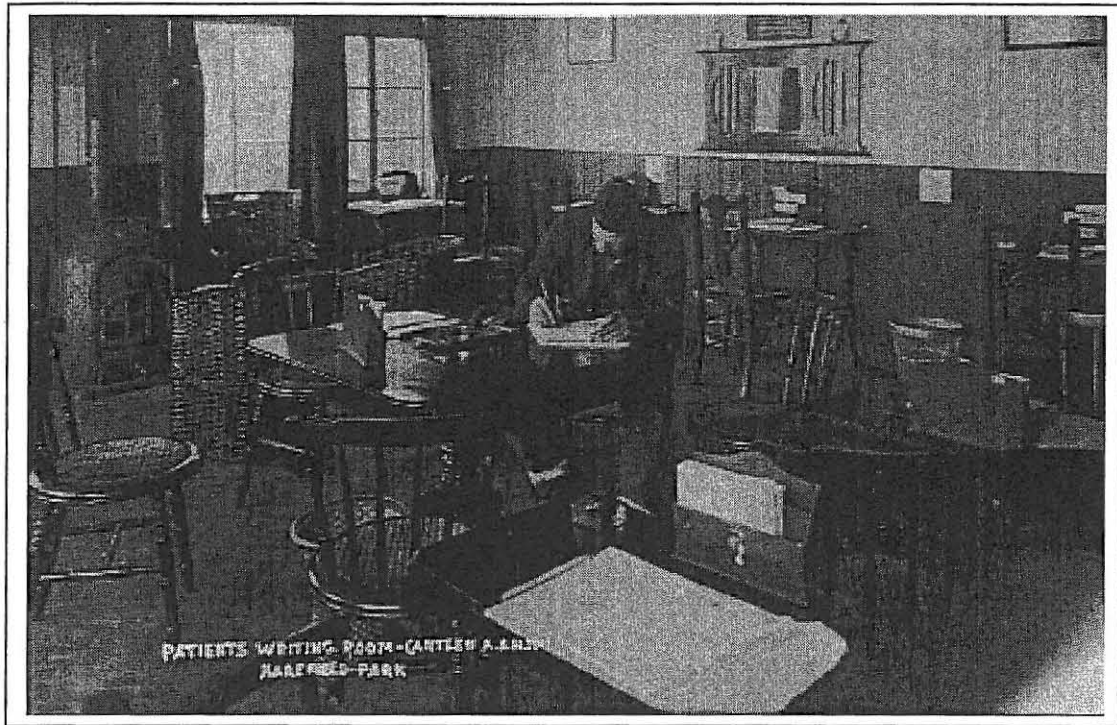
In September 1915, there was a proposal from the Hospital that it should be upgraded to a General Hospital, based on the number of patients and the nature of the treatments performed [2]. Higher authority replied that this was "inadvisable at present".

In a letter of 29 September 1915, it was stated that the orderly in charge of the Hospital Post Office was Cpl. T. J. Le Cheminant, and that the mail boxes were cleared three times daily, Monday to Saturday. The mail was taken from there to Harefield Post Office, and then to Uxbridge (5 km south of Harefield) for sorting [3]. Other orderlies mentioned as being in charge of the Post Office were Pte. Ferguson (from 5 June 1916), Cpl. L. Moore and Pte. P. Emery (temporarily when Cpl. Moore was admitted to the hospital as a patient on 28 November 1916!).

Hospital Corps Order #148 of 10 June 1916 stated "that Official stamps are available for patients only, and that private letters, posted by Staff, without stamps affixed, will not be forwarded." [4]. On 8 January 1916, Corps Orders announced that a Reading and Writing Room had been opened. In a later essay, Chaplain (Rev.) A. P. Bladen stated that "writing materials were liberally provided." [2].

In the Corps Order of 30 October 1916, under the heading of "Postal Arrangements", soldiers were informed that "Postage must be prepaid. Letters, etc, up to 4 oz. to Australia or to members of the AIF [Australian Imperial Forces] in France, and marked 'On Active Service' will be sent without postage prepaid." The Hospital Post Office at that time was open for three sessions each day, Monday to Saturday, and for

one session on Sunday, each to end with the dispatch of mail to the Harefield Post Office [5].



The patients' writing room at No. 1 Australian Auxiliary Hospital, Harefield Park, England.

#### References:

1. AWM series 224, file MSS427. No. 1 Australian Auxiliary Hospital, general file 1915-1919.
2. AWM series 224, file MSS429. No. 1 Australian Auxiliary Hospital, general file 1916-1919.
3. AWM series 25, file 399/14. No. 1 Australian Auxiliary Hospital, general Correspondence, August 1915 – January 1916.
4. AWM series 25, file 707/11 (pt.83). Routine Orders. No. 1 Australian Auxiliary Hospital, January – June 1916
5. AWM series 25, file 707/11 (pt.85). Routine Orders. No. 1 Australian Auxiliary Hospital, October - December 1916

---

#### A GLIMPSE INTO THE PAST (John Mathews)

Elsewhere in this Bulletin, I described my acquisition of a Post Office Guide for 1946 (with manuscript and paste-in amendments to 1948). There are some interesting glimpses into that era.

In the section on the postal rates, the following countries are listed:

- Aegean Islands (“see Dodecanese Islands”) – both had been deleted by pen, with the annotation “same as Greece”).
- Banks Islands (“see New Hebrides”).
- Berbera (“see Aden”).
- Chosen (“formerly Korea”) – with manuscript amendment “see Korea”.
- Cyrenaica and Tripolitania (“see Libya”).
- India, English. (India became an independent nation in 1947).
- India, French. (ceded to India in 1953-54).

- India, Portuguese. (the colony of Goa - taken over by India in 1961).
- Morocco, British Post Offices.
- Morocco, French zone.
- Morocco, Spanish zone
- Palestine (there is no listing for "Israel" which did not come into being until 1948).
- Thailand ("see Siam").

and, of course, the African countries still had their colonial names.

Under "Peru", one of the prohibited items is "all playing cards unless to members of the Diplomatic Corps".

In "Section 9 – Prohibited Postal Articles", para. 249, "Within the Commonwealth [of Australia]", sub-paragraph (xiii) reads "Any living creature other than bees, leeches, silkworms and harmless entomological specimens so packed as to avoid all risk of injury to the persons handling the packages or to other postal articles."

## AUCTION WATCH

Items of perfin interest from auctions/direct sales since the last Bulletin include the following. Thanks to Tony Nobilo, Bryan Magee and John Amiet, for passing on their spotting of perfin lots in auctions. Prices in A\$ unless indicated.

		Est.
a.	Qld railway stamps 1d, 3d, 6d, 8d, 1/-, 1/6 & 2/- all with perfin "QUEENSLAND / GOVT RAILYS" and all with m/s overprint "Specimen". (Prestige Philately, Mar 08)	sold for \$3,600
b.	3 private perfin covers with IDs – BB&CO (Bosch, Barthel & Co, Sydney) FG (Grimley Ltd, Sydney) and L/S (Lasstter & Co, Sydney) (Mowbray's auction, Apr 08)	\$200
c.	1900 cover of Feldheim, Gotthelf & Co, Sydney (ID on flap) (eBay, May 08)	sold for US \$ 40
d.	OHMS cover of New Zealand High Commission, London, to USA with 1½d brown KGVI perf "NZ" and NZHC cachet. (eBay, May 08)	sold for US \$ 48
e.	"BNZ" perfin on 11 GB QV Jubilee stamps (duplication) (Len Jury, May 08)	NZ \$ 32
f.	NZ "NZF" (3) and "WT" (1) on SSF adverts. (Len Jury, May 08)	NZ \$ 16
g.	CM.1 on 5/- Roo 1 <sup>st</sup> wmk. (eBay, May 08)	sold for US \$ 51
h.	GDM.1 on 6d orange Western Australia Govt Railways parcel stamp. (see article in this Bulletin) (eBay, May 08)	sold for GBP 10.30
i.	PRT.1 on 3/- brown (drab?) Victorian Duty Stamp. (eBay, May 08)	sold for US \$ 84
j.	Victoria £1 KEVII perf "OS" CTO. (eBay, May 08)	sold for US \$ 92
k.	1940 cover of New Zealand High Commissioner, London, with 1d and 1½d KGVI stamps perf "NZ". Official logo imprinted (eBay, May 08)	sold for US \$ 56
l.	NZ "NZ/ICo" on 5/- green postal fiscal QV long type. (Auckland City Stamps, May 08)	NZ \$ 25
m.	NZ "RI/CO/LD" on 3/- Mt Egmont with company cachet. (Auckland City Stamps, May 08)	NZ \$ 50
n.	5/- SHB with perfin F.1, plus 11 2d and 3d SHB stamps with different private perfins (see article in this Bulletin) (Prestige Philately, May 08)	sold for \$1,400
o.	5/- SHB with Telegraph Puncture (Prestige Philately, May 08)	sold for \$ 750
p.	Mint part sheet (left pane of 25, gutter and two columns to right of gutter) of 1946 2d Peace issue perf "VG" posn 2. (eBay, May 08)	sold for \$ 81
q.	Tasmania 1d stamp duty perf DWMLTD.2. (eBay, May 08)	sold for US \$ 31
r.	GB £1 brown KGVI perf "C/O/A" (eBay, May 08)	sold for an incredible \$123
s.	2/- KGV Silver Jubilee perf CB.4. (eBay, May 08)	sold for an incredible US \$103