

SOUTH PACIFIC PERFIN BULLETIN

NO. 61 APRIL 2003

The South Pacific Perfin Bulletin is published by the Perfin Club of New Zealand and Australia four times each year. Club subscriptions (including payment for the Bulletin) are A \$10-00 p.a. for New Zealand and Australian residents and A \$15-00 p.a. for residents of other countries (including airmail postage). Back issues available from Secretary.

President: Dr Derek Pocock, PO Box 670, Subiaco. Western Australia 6904 Australia

Secretary: John Mathews, 21 McConnel Cres, Kambah ACT 2902, Australia

email - JohnMa@ise.canberra.edu.au

Treasurer: Peter Wood, 9 Roslyn Street, Mt Martha Victoria 3934, Australia

Editor: David Andersen, 260 Hawkesbury Rd, Winmalee NSW 2777, Australia

email- d.andersen@library.usyd.edu.au

Circuit Managers:

New Zealand Ray Bennett, PO Box 354, Timaru, New Zealand

Australia John Mathews, 21 McConnel Cres, Kambah ACT 2902, Australia

Assistant Treasurer (NZ payments): Richard Smolnicki, 19 Oakleigh Street, Maungaraki, Lower Hutt, New Zealand

EDITOR'S COMMENT

It's different from what I have seen so it must be a forgery!!! This is a fairly common refrain in philately. Sometimes of course it is correct, but not always.

There is one article in this issue about officials that do not fall into the "official" version of events. Examination of the dies involved may assist in working out what has happened but we really need more information to be more certain. Hopefully some of our members may be able to help with other copies, items on cover etc. which may help solve this mystery. Can you help?

David Andersen

NEW MEMBERS

We welcome the following new members since the previous issue:

#213 Craig Chappell, Brisbane Qld

#214 Ian Pontifex, Nightcliff NT

#215 Brad Gilchrist, Gidgegannup WA

MEMBERS' "WANT ADS."

Richard Rymer (USA) is interested in collecting Tasmania pre-1913 perfins "OS", "T" and "A" as single stamps not on cover. He would like to buy or exchange, preferably small bulk quantities. Contact Richard at email address jrr210@hotmail.com (your Secretary can forward messages if you don't have access to email).

PERFIN CATALOGUES

Member David Coath has recently bought the following catalogues and is willing to provide information from them to other members:

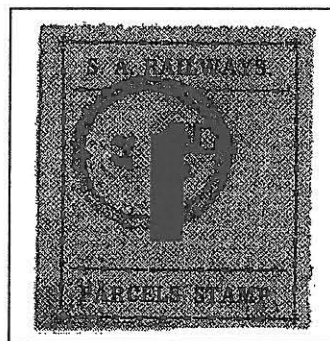
Update to Bavarian Perfins
 Supplements 1 and 2 for Indian Perfins
 Perfins of USA
 World Perfins - Africa
 World Perfins – The Americas
 World Perfins – Asia
 World Perfins – Europe
 Italian Perfins

David's email address is davidcoath@onthe.net.au

The Club library has recently bought the catalogue of French perfins - Timbres Perforés – France and Colonies, R. Dedecker, M. Herbert & R. Janot, 2nd ed. 1990 (plus 1993 Supplement). Requests for information from this catalogue can be made to the Secretary.

PERFINNED SOUTH AUSTRALIAN RAILWAYS PARCEL STAMP

Dave Elsmore reports the pattern HS.3/HS.4 on a South Australian Railways parcel stamp. This is only the second pattern reported on railway parcel stamps of this State, the other one being WCR.1 of W.C. Rigby Ltd. which was done much earlier and which is relatively common. Harris Scarfe Ltd. were iron-mongers and later operated a department store chain.



PERFINNED RAILWAYS PARCEL STAMPS

The last consolidated list of these was in the July 1997 issue of this Bulletin, and since then several additions have been reported in Bulletins of April 1999, January 2000, October 2000, and April 2002. The complete list of reported patterns is now as follows:

| | | | | | |
|------|--------------|---------|------------|------------|---------|
| NSW: | EFLD.1, | IHC.8, | MCCLD.1, | WG&COLD.1, | WILLS.1 |
| Qld: | BP.6, | ED.1, | FINNEYS.1, | K.3, L.2, | Q.1, |
| | SH&CO.1, | TBS.2, | TBS.3, | TCB&CO.1 | |
| SA: | HS.4 | WCR.1 | | | |
| Tas: | DWMLTD.2 | | | | |
| Vic: | B&WPTYLTD.1, | JCH.1, | KL.1 | | |
| WA: | GDCOP.1, | WS&CO.1 | | | |

REVIEW OF THE CATALOG OF PERFINNED REVENUES OF THE UNITED STATES by Tony Nobile

The intention to produce this catalogue was first mentioned in the American Revenuer April 1999 and the US Perfin Club Bulletin in May 1999. I have been involved in the project since it started with worksheets in June 1999.

The working group are members of the US Perfin Club, from the United States, Canada, Great Britain and New Zealand. Members of the American Revenue Association, State Revenue Society, the Beer Memorabilia Club and the Check Collectors Club have been or are going to be involved in this project. There have also been reports on the catalog in the American Revenuer, the US Perfin Club Bulletin, State Revenue Society Bulletin and Linns Stamp News.

US revenues include a wide range of State and Federal issues for such taxes as: Beer, Fermented Malt Liquor, Cigarettes or Cigars, Customs, Documentary, Distilled Spirits or Hard Liquor, Future Delivery, Narcotics, Oleomargarine, Proprietary, Rectification or Rectified Spirits, Stock Transfer, Tobacco, Wine, Cordials etc, Beverage, Cosmetics, Fertilizer, Liquor, Lock Seal and Luxury. Canadian revenues are also included in the project.

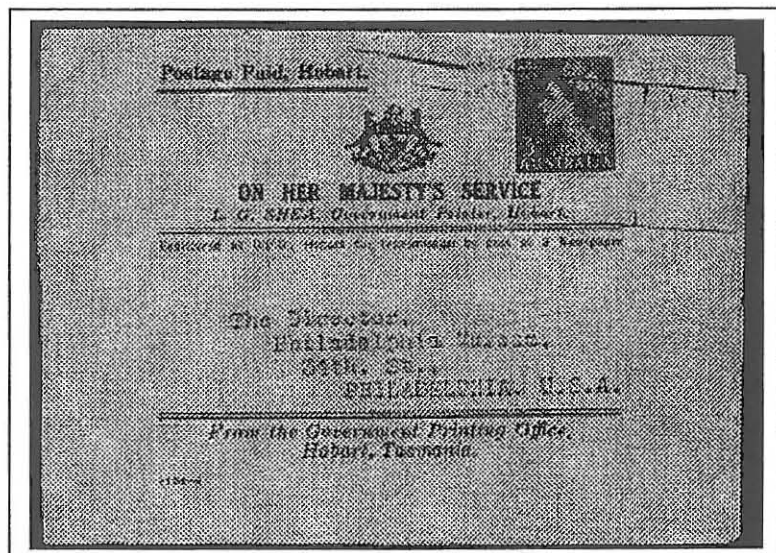
I have found this project very interesting and have learnt a lot, particularly as I did not know that there were so many revenues. They cover such a diverse range of subjects.

If you would like to help please contact: Chuck Spaulding, 48 Strathmore lane, Rockville Centre, NY 11570-1848, USA (email perfinman@juno.com).

OHMS NEWSPAPER WRAPPER WITH ADDED PERFIN (John Mathews)

The wrapper shown appeared on the eBay Internet auction recently. It bears the printed name of the Government Printer, Hobart (L. G. Shea), and is marked "Postage Paid, Hobart", but because it is addressed to the USA, it has had an extra 3d stamp affixed.

The added stamp has a 'T' perfin.



LIST OF LIBRARY HOLDINGS

(Members are invited to submit titles of perfin-related publications for consideration for adding to the library. Catalogues of France and Germany are already being sought. Members may borrow items from the list (borrower to pay postage both ways), or request photocopies of small sections of larger items (post free).

a. CATALOGUES

Perfins of British Malaya, by P. Giffen, 1989.

Canadian Stamps with Perforated Initials, by J. C. Johnson and G. Tomasson, 4th ed., 1985.

Security Markings, (Hong Kong Study Circle), by P. Orsetti & P. Pugh, Oct 1992.

Perfins of the Territory of Czechoslovakia, by Vojtech Maxa, 1972.

Timbres Perforés – France and Colonies, R. Dedecker, M. Herbert & R. Janot, 2nd ed. 1990 (plus 1993 Supplement)

Levant Perfins.

(Perfins of) Middle East.

(Perfins of) Independent Africa.

Catalog of Romanian Perfins, by László Erös, 1989.

Perfins of Argentina by Walter Bosé (Buenos Aires 1985)

Perfins of China by Harvey Tilles

The Perfins of Hong Kong by Harvey Tilles

Ireland Catalog of Perfins by Richard Mewhinney (Perfins Club 1984)

Private Perfins of Norway.

Articles on Danish, Greek perfins.

b. GB Perfin Society Bulletins

173-178, Jan – Nov 1978

215, Feb 1985

217, June 1985

219, Oct 1985

221, Feb 1986

222, Apr 1986

225, Oct 1986

233-243, Feb 1988 – Dec 1989

248, Oct 1990

249, Dec 1990

254, Oct 1991

260-272, Oct 1992 – Oct 1994

310, Feb 2001 (to current)

+ Library Index dated July 2000

c. US Perfins Club Bulletins

378, April 1985

381, June 1985

410, June 1988

453-474, Oct 1992 – Dec 1994

515, Jan 1999 (to current)

+ Library Index dated July 2000

d. Miscellaneous

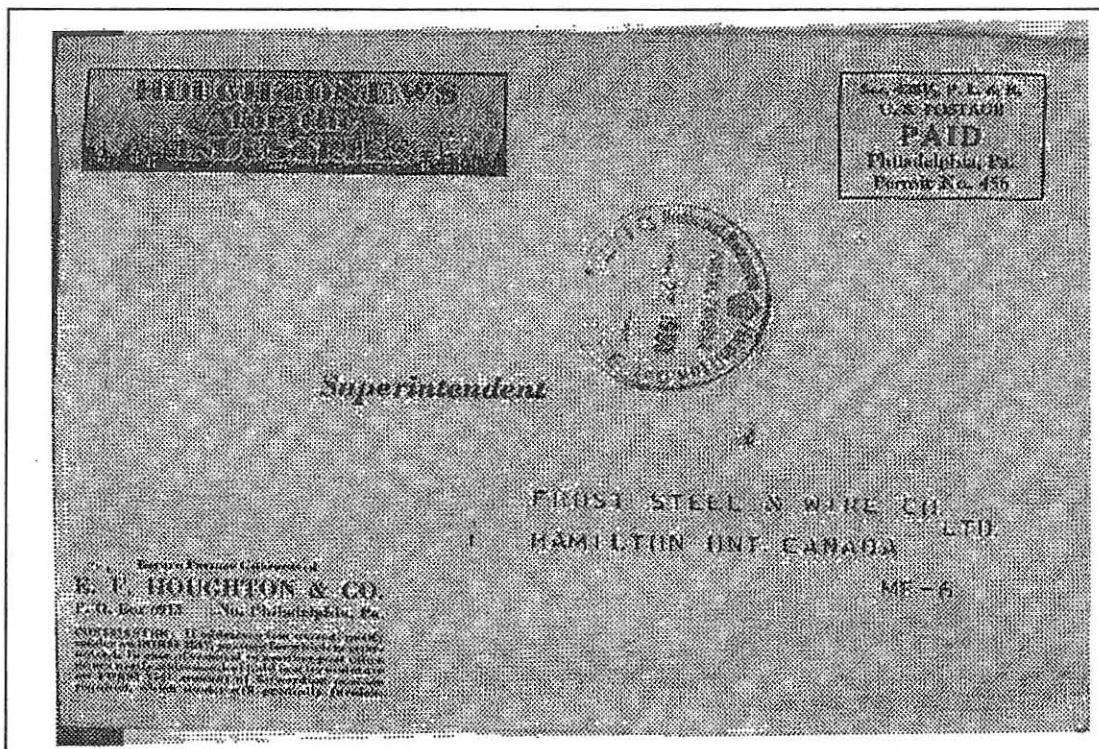
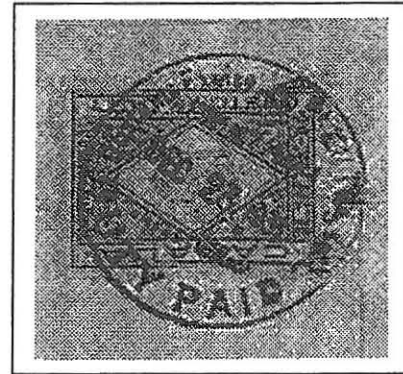
Beating the Odds – The Story of Tattersall’s Private Mail Network 1902-1930, David McNamee FRPSL, pub. RPSV, 2002

Rozelle Walks, The Balmain Association, Inc, 1997

Various articles from stamp magazines.

PERFINNED CUSTOMS DUTY STAMP ON COVER

The item shown was recently sold on eBay Internet auction. The cover is a “Postage Paid” company cover of E.F. Houghton of Philadelphia, Pennsylvania, USA, and was sent to Hamilton Ontario. On the front is a cachet “National Revenue – Hamilton, Ont. / Postal Parcels / DEC 23 1930 / DUTY FREE”. On the reverse is a 2c Canada Duty Stamp perfinned with the pattern EHF (monogram) which is listed in “Commercial Perfins of Australia” as also being used on Australian Customs Duty Stamps as EFH.1. The Canadian Duty Stamp has a cancelling cachet “Customs Excise – Hamilton, Ont. / Postal Parcel / DEC 23 1930 / DUTY PAID”.



PERFINNED AEROGRAMS SOLD ON eBay

In December 2002, two perfinned aerograms were sold on eBay by the same vendor. They were the 14c Aeroplane, perfinned "G/NSW", used by The State Library of New South Wales, Macquarie Street, Sydney, to different addressees in Belgium and both posted on 8 October 1976. The first one sold for US \$34+. The second one was not listed on eBay until after the first one closed, and sold for US \$26.

NEW TATTERSALL'S UNDERPRINT?

A recent eBay lot of Australian private perfins included two Tattersall's underprints. One, on a King George VI definitive stamp, was of the familiar style probably done with a typewriter in purple ink. These consist of the word "Tattersalls" in either one line or hyphenated into two lines. The other underprint was on the 10c Architecture issue of 1973, and was of a distinctly different style. There were 4 lines of printing visible on the reverse of the stamp, although the fourth line was not readable. From the other three lines, the wording appeared to be "... TATTERSALLS GEO. ADAMS .." repeated, the words being staggered from line to line as shown. The line separation appears to be constant and would indicate that the whole sheet was printed at one time by some machine.

| |
|--|
| <p>O. ADAMS ALLS GEO. TTERSALLS (unreadable)</p> |
|--|

Has any other reader seen such an underprint, and be able to provide more date information regarding its usage?

EVIDENCE REGARDING VICTORIAN FIRMS' PERFINS USED IN TASMANIA

Another interesting item from eBay may provide the definite answer to the question of the reason for Victorian firms' perfins being used in Tasmania. The two main "rival" theories are the use on "reply paid" envelopes to customers in Tasmania, or where the letter has been carried across to Tasmania by someone on a ship and posted on arrival either for convenience or to minimise the postage to be paid.

The item is a cover of Robert Reid and Co. Limited, of Melbourne (identity imprinted on flap) which bears two 1d Kangaroo stamps hand cancelled in Burnie, Tasmania, in 1913. The addressee is Messrs. C. E. Button & Co., Launceston, Tasmania. There are no other markings on the cover. So it was not a "reply paid" envelope. The two stamps applied indicate that it was over the standard weight. Were the postage rates for such items different for intrastate and interstate mail in 1913?

DID A PERFORATOR SURVIVE THIS FIRE? (John Mathews)

On the morning of Tuesday, February 5, 1907, the premises of Harrold, Colton, and Co. at the corner of Currie Street and Topham Place, Adelaide, was completely gutted by fire. The fire was apparently first noticed by a stable-hand at the adjacent John Bull Hotel, and the caretaker of the Adelaide Steamship Company, which was a little further along Currie Street. When the latter arrived for work shortly before 6 in the morning, he noticed smoke billowing across Currie Street from Harrold, Colton and Co's premises and raised the alarm. The fire brigade arrived within minutes of the alarm but by then the fire was well established, with so much inflammable material inside the building including wood, oils and paints, cartridges and petrol. However, the firemen were able to direct water on the fire from all sides of the building. All danger of the fire spreading to neighbouring buildings was over within an hour or two of the outbreak, but the firemen were kept busy for the remainder of the day drenching the burning debris. Altogether 48 firemen were involved in fighting the fire, with some coming from fire stations as far away as Unley, Norwood and North Adelaide.

It was later estimated that the fire hoses had discharged 7,000 gallons of water per minute for 5 hours. After the fire had been eventually extinguished, it was found that although the inside was gutted, the façade showed little sign of the inferno inside, and even the brass plates remained untarnished. The side wall in Topham Place was not so lucky. It collapsed into Topham Place about 7.15 am, bringing down hundreds of telephone lines to the western part of the city. Over 10 miles of telephone cable had to be replaced.

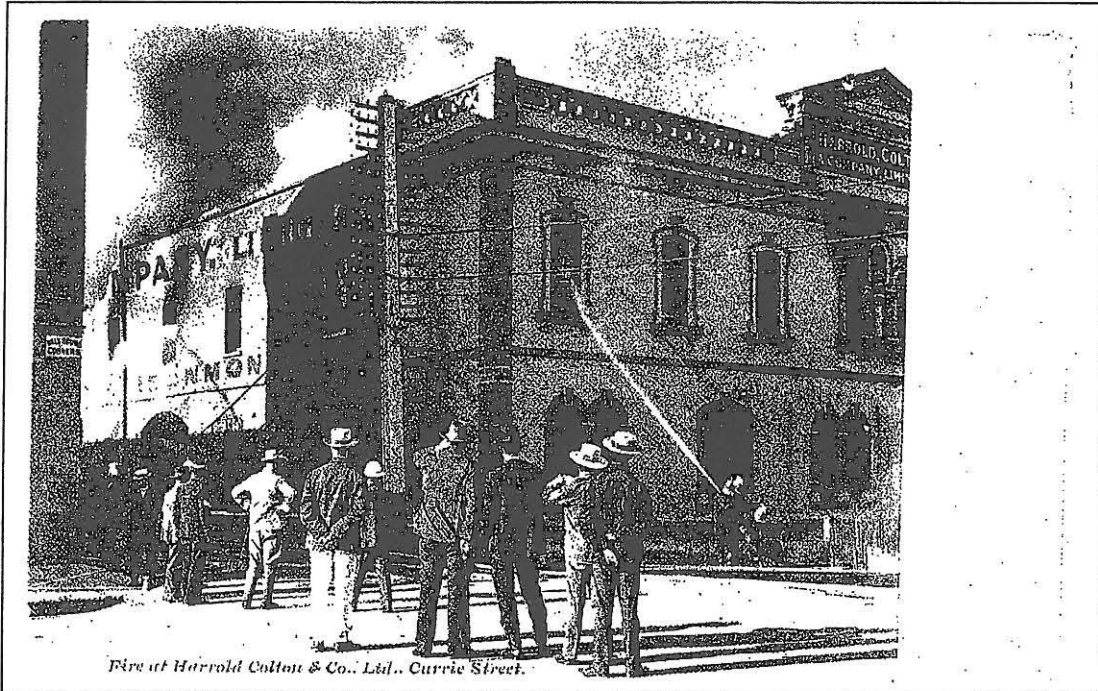
At the time of the outbreak of the fire, the Governor of South Australia (Sir George Le Hunte) was out enjoying a ride on his horse. When he reached the scene of the fire, he placed his horse at the disposal of the fire brigade in order that they could convey messages more quickly.

Because of the nature of the contents of the building, the flames amongst the dense black smoke were a variety of colours from red through to violet. Two firemen received minor injuries when thousands of cartridges exploded. A powder magazine containing 200 pounds of powder was prevented from exploding. It would have been enough to destroy the surrounding buildings.

The books, papers, and office boxes of the firm were kept in the strong-room adjacent to the office, and by 9.30 am, the fire was sufficiently under control for an attempt to be made to save them. An army of clerks took the documents to the firm's other premises on the other side of the road. A large framed portrait of the firm's founder, Sir John Colton, was rescued untouched by fire or water. Sir John had opened a business as a saddlers' ironmonger shortly after arriving in South Australia in 1839 (only 3 years after the colony was founded). He had been a Premier of South Australia, and a former Mayor of Adelaide.

Some guns and rifles had also been salvaged intact. Iron and brass bars had not been affected, but steel had been ruined by the intense heat, and much glass, crockery, and agricultural machinery was destroyed. The firm continued trading from its other

premises and no employees lost their jobs. If the company's perforator had been in the destroyed premises, it too must have been rescued, for it continued in service until 1971.



Of the estimated 80,000 pounds total damage, over 65,000 pounds was covered by insurance. The list of insurers read like a "Who's Who" of perfin users. It included London & Lancashire, North Queensland Insurance Company, Union Insurance Society, National Insurance Company of New Zealand, Norwich Union Company, Commercial Union Insurance Company, Atlas Insurance Company, Standard Insurance Company, Alliance Insurance Company, and South British Insurance Company.

Adelaide is often referred to "the City of Churches" (there were at one time 99 within the City square mile), but there were just as many hotels. Three of these were close on either side of Harrold, Colton and Co's premises and across the road from it. These apparently did good business from onlookers during the battle to extinguish the flames, in the mid-Summer heat of that February day. The staff of the White Horse Hotel, to the east of the burning building, brought large quantities of tea out to the many firemen and police on duty.

By coincidence Tuesday, February 5, 1907 was the day the conversion of Adelaide's tram system to electric was started.

BNA PERFORATOR

A couple of smaller issues arrived recently. The last issue for 2002 v.23 no.6 contained a single article "More on the C38 perfin (CMS)" by Russell Sampson and v.24 no.1 (2003) contained Auction #20.

E. S. WIGG & SON (John Mathews)

Edgar Smith Wigg was born on 7 June 1818 in Suffolk, England, and arrived in Adelaide on Friday 11 May 1849 on board the “William Hyde”, bringing with him his wife, son Edward, and fifty pounds. On 22 June of the same year, he leased premises at 4 Rundle Street, adjacent to the “Beehive” Corner*, and commenced business as a bookseller.

In 1850, recognizing the need for account books, he purchased paper from George Elder, and later that year employed a paper ruler and a book binder to commence the manufacturing section of the business. As sales increased, the business moved to 12 Rundle Street and purchased the business of Charles Platt, thus becoming the Colony’s largest bookseller.



(from an illustrated “Album of Adelaide” produced by E.S.Wigg & Sons. From names able to be read on neighbouring buildings and found in Directories, this view is about 1880. The “album” may have been produced for the 50th anniversary of the colony in 1886)

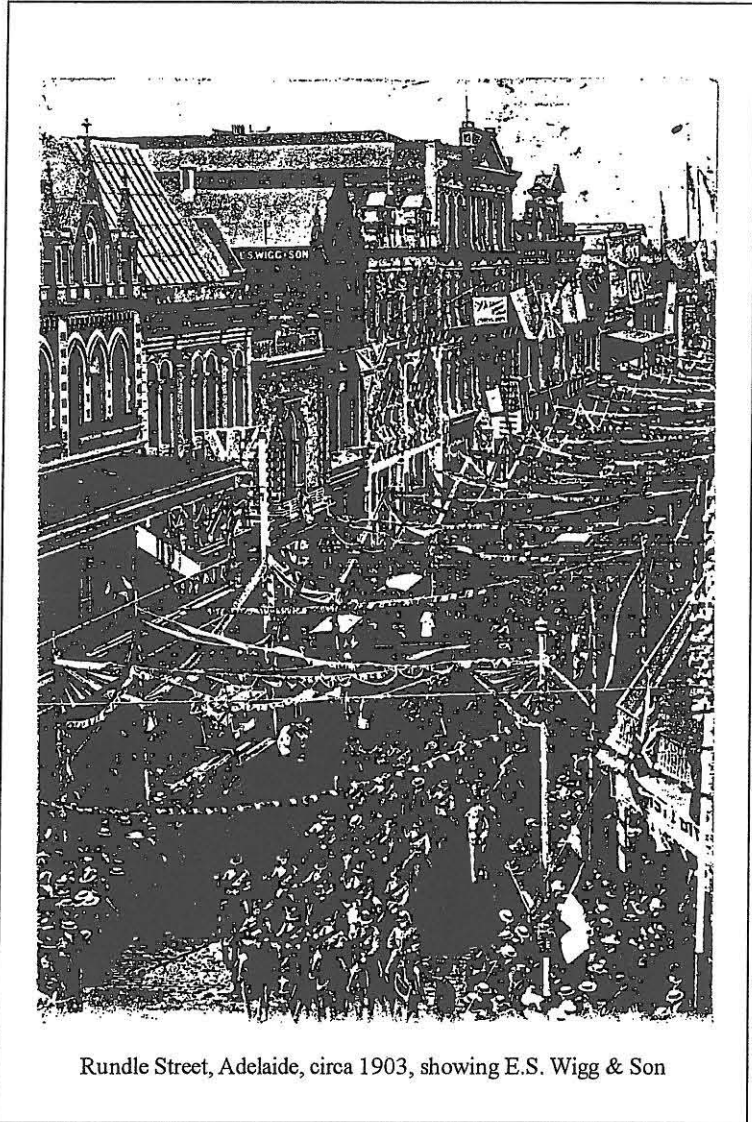
In 1873, William Davidson arrived from England on board the “Orient”, persuaded to come by his brother-in-law, Edward Neale Wigg. Manufacturing increased, with premises being opened in Apollo Place. Artist supplies, Educational and Stationery supplies, printing and Homeopathic Medicines had been added to the range of products sold.

In 1885, E. S. Wigg’s daughter Mary married William Davidson, who had taken over the day-to-day running of the business. E. S. Wigg died in 1899, aged 81 years.

* the “Beehive” Corner was the north-east corner of King William and Rundle Streets, and usually referred to as the “Beehive” by Adelaide residents.

Meanwhile branches had opened in Western Australia, and in 1901 the first envelope machine was installed. In 1902, land was purchased on the corner of Port Road and Phillips Street, Thebarton, and by 1904 all manufacturing was located in the new factory, which boasted South Australia's first "saw-tooth" roof. In 1921, the Head Office moved from Rundle Street to 65 Grenfell Street, where the retail shop is still located today.

By 1924, when William Davidson died, his son Hugh became Managing Director, a position he held until his death in 1964, when his son assumed the role, maintaining the family involvement in the company. Rationalisation over this period had taken place, with greater emphasis on manufacturing.



Rundle Street, Adelaide, circa 1903, showing E.S. Wigg & Son

During the 1970s and 1980s, Sales Offices were opened in Sydney, Melbourne and Brisbane, giving E. S. Wigg and Son a presence in five States.

Throughout recent years, the accent has been on quality and innovation, placing this firm as one of Australia's foremost manufacturers and printers of specialty envelopes and mailers for use in the photographic industry, fundraising and direct mail, as well as stocking a large range of commercial envelopes for every-day use. In 1999, E. S. Wigg & Son was proud to celebrate its 150th anniversary as a South Australian company.

On a personal note, Edgar Smith Wigg had much sadness in his early life in South Australia. By 1853, his wife, Fanny Neale Wigg, and two daughters (both born in South Australia) had died. Later that year, he remarried Alice Lane, but Alice died in January 1855 (possibly in childbirth). At the end of 1855, he married Jane Eccles and they had six children, one of whom married William Davidson. In 1856, the Adelaide papers reported the death of his father Richard in Tunstall, Suffolk, England.

CONGRATULATIONS

At the "half" National Stamp Show held in Hobart 11-13 April featuring traditional, postal stationery and revenue classes, David McNamee's three-frame exhibit, "Focus on the Holes: Tasmania Perfins," received a Large Silver in the traditional class. It was the only display devoted exclusively to perfins.

David McNamee also represented PCNZA at the Palmares Banquet and presented the award donated by PCNZA to Dave Elsmore for Best Revenues for his "Western Australia Revenues."

G/NSW IN THE 60'S

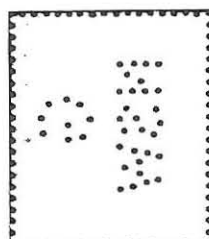
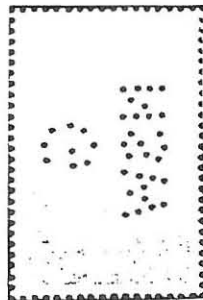
David Andersen

In the October 2002 SPPB the 7/6 and £1 Navigators with the G/NSW Type C perfin were reported. These items suggested that the Type C pattern was used much later than previously thought, at least till 1964. It had formerly been accepted that the Type D pattern replaced the Type C in late 1961/early 1962 as the most recent issue with the Type C pattern was the 1961 Christmas stamp issue in October 1961.

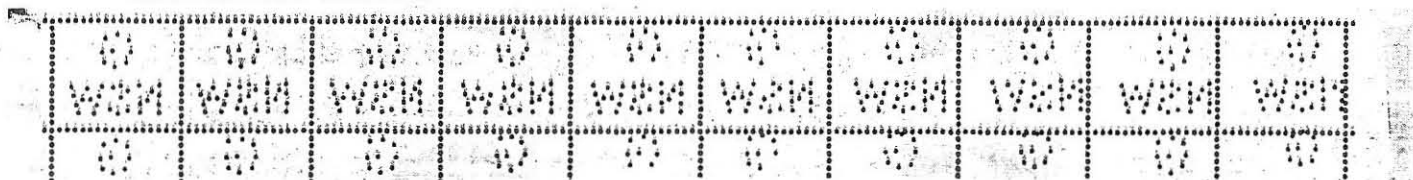
I have now been shown a number of additional items with the Type C pattern some of which were issued after 1961. These included:

- 2/3 Wattle – appears to be a CTO cancel
- 9d, 1/6, 2/-, 2/5, 2/6 and 3/- birds -all mint
- 5d, 8d and 2/3 Anzac- all mint
- 5d Monash - mint block of 4
- 5d Churchill - mint block of 4
- 5d Christmas 1965 - mint block of 4

On the face of it these items do suggest that the Type C was used until at least 1965. However, as I have not seen these issues before and there is no record of them that I am aware, a closer look was in order.



The spacing between the sets of initials on the blocks and wider stamps is greater than the regular Type C die head. These new items have the G/NSW initials at varying spacing ranging from 14 to 21 mm apart rather than the normal 7 to 8 mm. As the Type C die consisted of a series of 10 dies arranged horizontally as below, the new stamps cannot be from the same machine.



All of the dies, even in the blocks, appear identical. This is not normal for the Type C die head as the dies are quite distinctive as you can see from the strip above. This Type C die head was used from the KGVI issues through to 1961 as the dies are readily identifiable on used issues throughout this period. Both of these factors suggest a different machine was used possible with a set of dies arranged in a vertical arrangement like the Type D issues. Where are the used copies that should be found with this machine? Was this a trial machine? Are these a series of fakes? Can you help?

AUCTION WATCH

Items of perfin interest from auctions/direct sales since the last Bulletin include the following. Thanks to Tony Nobilo, Geoff Legge, and John Amiet for passing on their spotting of perfin lots in auctions. Prices in A\$ unless indicated.

| | | | Est. |
|----|--|--------------------------------|-------------|
| a. | PL&B.15 on ¼ KGV sm. Mult wmk, p.13.5x12.5 | (eBay, Dec 02) sold for | US \$ 4.25 |
| b. | Illustrated cover of Western Australian Govt Tourist and Publicity Bureau, Perth with 2d KGV perf "W/A" | (eBay, Dec 02) unsold at | US \$ 10 |
| c. | 1924 cover of State Monier Pipe & Reinforced Concrete Works, Pitt St., Sydney with 1½d green KGV perf "OS/NSW" to USA. Taxed 37.5 centimes (US 8c paid on arrival) | (eBay, Dec 02) sold for | US \$ 25 |
| d. | NZ "GNB/L" perfin on 1d Universal | (David Holmes sale, Jan 03) | NZ \$ 80 |
| e. | NZ "USSCO" perfin on 1d Universal | (David Holmes sale, Jan 03) | NZ \$ 25 |
| f. | NZ "BG/EC" on ½d KGV | (David Holmes sale, Jan 03) | NZ \$ 40 |
| g. | WA "Commissariat" punctures on 4 stamps | (eBay, Mar 03) unsold at | US \$ 125 |
| h. | Canadian 2c Customs Duty stamp with "EHF" perfin on reverse of cover from USA to Hamilton, Canada | (ebay, Mar 03) sold for | US \$ 16 |
| i. | NZ "DB/CO" (the more common one) on 3d Huia with 1903 TPO cancel ("Dun. Nth") | (eBay, Mar 03) sold for | US \$ 4.75 |
| j. | NSW £10 Duty Stamp perf "G/NSW" | (eBay, Mar 03) sold for | US \$ 10.50 |
| k. | Victoria KEVII £1 rose, perf "OS", CTO | (eBay, Mar 03) unsold at | US \$ 60 |
| l. | NZ "S.S.E." perfin on 4d SSF | (eBay, Mar 03) sold for | US \$ 7.50 |
| m. | NZ "USSCO" perfin on 1d Universal | (eBay, Mar 03) sold for | US \$ 10 |
| n. | Tasmania 4d "Courier" with triangular punch (Convict Dept.) | (eBay, Jan 03) sold for | US \$ 50 |
| o. | NZ Prime Minister cover used London 8 June 1953 (Coronation trip?) with KGVI 3d and 1/- both perf "NZ" | (Ashford Stamps sale, Jan 03) | NZ \$ 150 |
| p. | NZ "MGM" perfin on 1d green KGVI on illustrated window envelope of Metro-Goldwyn-Mayer. | (Complete Stamps sale, Jan 03) | NZ \$ 200 |
| q. | "CofA" perfin on GB KEVII 2/6 | (eBay, Mar 03) sold for | US \$ 23+ |
| r. | NZ "HB" perfin on 3d Huia. FU | (Mowbray auction, Apr 03) | NZ \$ 30 |
| s. | "S&S/W" on ½d Mt Cook. | (NZ Stamp Auctions, Mar 03) | NZ \$ 30 |
| t. | NZ "S.S.E." s/w on mirror pr 1d SSF | (Stirling & Co sale, Jan 03) | NZ \$ 30 |