

SOUTH PACIFIC PERFIN BULLETIN

No. 37 April 1997

The South Pacific Perfin Bulletin is published by the Perfin Club of New Zealand and Australia four times each year. Club subscriptions (including payment for the Bulletin) are A \$10-00 p.a. for New Zealand and Australian residents and A \$15-00 p.a. for residents of other countries (including airmail postage).

President: "Vacant"

Secretary: John Mathews, 21 McConnel Cres, Kambah ACT 2902, Australia

Treasurer: Peter Wood, 9 Roslyn Street, Mt Martha Victoria 3934, Australia

Editor: David Andersen, 260 Hawkesbury Rd, Winmalee NSW 2777, Australia
email- d.andersen@library.usyd.edu.au

Circuit Managers:

New Zealand Ray Bennett, PO Box 354, Timaru, New Zealand

Australia John Mathews, 21 McConnel Cres, Kambah ACT 2902, Australia

EDITORIAL

These days we hear a great deal about the Internet and the World Wide Web. A great deal of correspondence both private and business is conducted on this medium and provided that the security aspects of these systems can be dealt with the usage will grow very much greater. So what has this got to do with perfin collecting you might ask ?

As the usage of perfins worldwide is currently quite small and a fair amount of it is philatelically related or inspired the effect on perfin usage is likely to be quite small. However as an information source or medium of exchange of information the effect may be quite significant. Recently I searched on the world wide web for sites that listed perfins. A large number of sites were identified that I will need to go through at some stage. Some of these were mentions of perfins in auction listings and others contained useful information. A couple of interesting sites so far encountered include:

Toke Norby's The SPIFS/PERFINs Story (for those with access- <http://hlidskjalf.fi.aau.dk/-tn/perfin18.html>) which provides a deal of useful information on the early history of perfins, a quest for the originator of the word perfin, perfin Societies around the world and information about Danish perfins. In case you are wondering the Perfin Club of New Zealand and Australia is mentioned !

APRL Titles about Perfins (<http://www.west.net/-stamps1/perfins.html>) which lists books held by the American Philatelic Research Library which include information about perfins quite a few of which were new to me. There is even an entry under Tibet !

It wouldn't surprise me to find a perfin online journal sometime in the future. However in the In the meantime most of us will communicate with print bulletins and by letter. (Which gives me the opportunity to appeal for more articles, information to publish, interesting items, offers of exchange etc. Please send by snail mail, email or airmail to the Editor).

David Andersen

NEW MEMBER

We would like to extend a warm welcome to the following new member since the last Bulletin:

#160 Doug Brookson, Nanango, Queensland

SUBSCRIPTIONS

1997/98 subscriptions are due in July 1997. As the Club finances are healthy there has been no need to increase subscriptions.

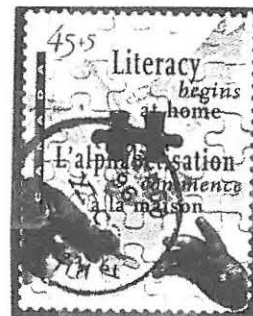
Club subscriptions (including payment for the Bulletin) are A \$10-00 p.a. for New Zealand and Australian residents and A \$15-00 p.a. for residents of other countries (including airmail postage).

New Zealand members may send payments (NZ\$11) to Barry Clarke, 24 Spedding Road, Whangarei, New Zealand (after May 1997) . All other members please send payment to the Treasurer, Peter Wood, 9 Roslyn Street, Mt Martha, Victoria 3934 AUSTRALIA..

A STAMP WITH PAPER MISSING, BUT

J Mathews

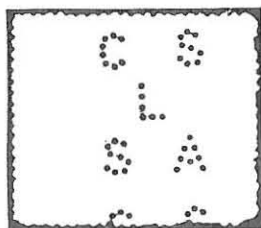
Late in 1996, Canada Post released a stamp to highlight the importance of literacy ("Literacy begins at home"). To illustrate the theme, the design of the stamp incorporates a jigsaw pattern in the background with an adult hand passing the last piece of the puzzle (with part of the text on it) to a child's hand. The place where the last piece fits has been cut from the stamp! . It is not a perfin, and it does not fall into the same category as the "T" and "#" cancelling punches on duty stamps, so is this an example of a new specialist area of philately ? Are there any other known examples of stamps with pieces missing as part of the stamp design ? (The writer is only too aware of the recent Netherlands Christmas mini-sheet !)



AUCTION 1/1997

The catalogue for this auction is included with this Bulletin. As with the previous auction, there is much variety in auction 1/1997, with some more covers coming onto the market. Another highlight this time is the inclusion of several lots of "CofA" perfins on stamps of Great Britain, these having been used mainly at Australia House in London- collectors of both Australian and British perfins can justifiably feel that these items belong in their collections. As always, early bidding is recommended as there have been instances in the past where the successful bidder has been determined as the earlier of two equal bids.

A NEW PERFIN ON AN AUSTRALIAN CUSTOMS DUTY STAMP



Among some new information submitted by John Amiet is an Australian Customs Duty stamp for use in London (1/2d denomination) with the perfin "CS/L/SA" which appears in the GB catalogue as pattern C7140.02 and belongs to "Civil Service Supply Association, London". It could be the first instance reported of a perfin on such a duty stamp used in the UK, as all of the other issues with perfins and known users have originated in the USA (with US currency overprint) .

Pattern B&F.1 does not have a known user and it is not recorded whether it was the UK or USA version of the duty stamp- can any reader assist in resolving this ?

AUCTION WATCH

The following items of interest have been seen in auction catalogues since the previous Bulletin. Thanks to Tony Nobilo, John Amiet, David Richards and Bryan Magee for their contributions to this list.

Undoubtedly, the major news is the selection of lots in the Stanley Gibbons auction No.13 of March 1997 which included:

	Est
a. Collection of Brit. Com. (no Aust,GB or NZ) (c.1120)	\$500
b. Collection of Canada perfins (c.460)	\$100
c. Collection of France perfins (c.630)	\$120
d. Collection of Germany perfins (c.1500)	\$300
e. Collection of GB perfins, inc some "CofA" (c.3780)	\$400
f. Collection of NZ perfins (c.240)	\$500
g. Collection of Aust and world perfins (c.650)	\$160
h. Collection of USA perfins (c.2600)	\$400
i. Collection of Aust private perfins on Comm issues pre-1937 inc 2 on cover (c.1870)	\$1000
j. Collection of Aust private perfins post-1937 inc. covers (c.1580)	\$400
k. Collection of State Govt perfins (c.2760)	\$300
l. Collection of private perfins on State issues inc. 1 cover (c.1080)	\$450
m. Collection of world perfins(ex other groupings mentioned in items a.to l.) (2500+)	\$500

Items from other auctions included:

n.	BNZ on GB QV 2/6 (Stirling & Co. Sale 423 Jan 1997)	NZ\$15
o.	NZ on GB KGV 10/- dk blue (11/9 holes)(Stirling & Co. Sale 423)	NZ\$25
p.	BNZ on GB 10/- ultramarine (Stirling & Co. Sale 423)	NZ\$100
q.	S&S on 1d Universal (Stirling & Co. Sale 423)	NZ\$30
r.	WT on 1/2d KEVII (Stirling & Co. Sale 423)	NZ\$50
s.	1/- grey-gr & p.red Aust Customs Duty stamp with perfin (not specified) (Budget Stamp Sale 35, Jan 97)	\$7
t.	Mauritius reg cover to Perth with perfins "MCB/M" (David Holmes NZ Sale 7 Feb 97)	NZ\$75
u.	NZ perfin "SB/ICo" canc Auckland 1884(David Holmes Direct Sale 5, Jan 97)	NZ\$250
v.	NZ SSE on 2d SSF (Ashford Stamp Auction 5, Feb 97)	NZ\$15
w.	1937 Aust cover with HS perfin, B. Hill cds (Ashford Stamps Auction 5, Feb 97).	NZ\$50
x.	1920 Aust PTPO cover with addl. 1/2d green KGV perfin SMC (Ashford Stamp Auction 5, Feb 97)	NZ\$50
y.	WA 10/- mauve perf "WA" (Status International Auction 173, Feb 97)	\$60
z.	WA 5/- emerald green perf "WA" (Status International Auction 173, Feb 97)	\$60
aa.	"T" perfins on Roos/KGV (50) (Status International Auction 173, Feb 97)	\$100
ab.	"NZ" on GB 2/6 QV (Stirling & Co. Direct Sale, Feb 97)	NZ\$25
ac.	NZ 1880 £300 QV Long Type, punched "Duty Paid" (Mowbray NZ Auction 244)	NZ\$50
ad.	1922 KGV 6d "Fine Paid" o/p + "Duty Paid" punch (Mowbray, NZ Auction 244)	NZ\$15
ae.	Victoria 1901 1/2d green, sheet of 240 perf "OS", MUH (Mowbray, NZ Auction 244)	NZ\$400
af.	W&T/W om NZ 1/- KEVII used (Stirling & Co. Sale 425, Mar 97)	NZ\$20
ag.	J.B&CoLtd on NZ 2d 1935 (also , no o/p) (Stirling & Co. Sale 425, Mar 97)	NZ\$10
Philatelics (Australia) Postal Bids Sale no.120 April 97 included a good range of Australian perfins in collections		
ah.	Accumulation of 240 private perfins on State issues	\$125
ai.	1932-35 2/-, 5/-, 10/- CofA Wmk Kangaroos perforated G/NSW used with perf. faults	\$150
aj.	Selection of 34 different used stamps perf OS/NSW including 1913 4d, 6d and 1/- 1st Wmk Kangaroos, 1915 2 1/2d and 6d 2nd wmk Kangaroos, 1916 4d Lemon KGV, 1921 4d violet KGV and 1922 4d blue KGV. Odd fault.	\$200
ak.	Accumulation of 460 private perfins on KGV issues including few Kangaroo issues	\$225
al.	Accumulation of 1,250 Pre-decimal and Decimal used stamps perf VG	\$250
am.	Accumulation of over 1,000 perfins in large stockbook with main strength in British issues	\$50

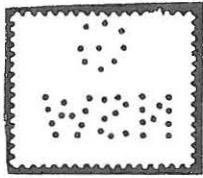
**NEW SOUTH WALES STAMP DUTY ISSUES WITH G/NSW PERFINS:
AN UPDATE** (Additional information has been supplied by John Amiet and John Mathews)

The earliest date reported for the GIO overprints is now 3rd October 1962. Additional items reported with the G/NSW Type C perfin are listed below.

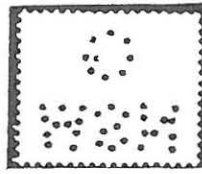
	Positions	2	4
2d orange			X
4/- blue			X
10/- grey			X
12/- green		X	
3d magenta with G NSW underprint			X

G/NSW PERFINS 1959 to 1965 David Andersen

This is a most interesting period for G/NSW perfins, during the changeover from G/NSW Type C to G/NSW Type D. Much confusion and I imagine a fair bit of misidentification has occurred with these issues.



G/NSW Type C



G/NSW Type D

The change from G/NSW Type C to G/NSW Type D occurred it would seem in late 1961, the last common item found with the G/NSW Type C pattern being the 1/- Colombo issued in June 1961. The 1961 Christmas stamp which I have not sighted is also reported with this pattern issued November 1961.

The G/NSW Type D pattern was used on stamps current at this time which included a number of items issued prior to 1961. For example the 2d QEII yellow-green 1950 defn was still being issued in late 1961/early 1962 as the 2d value from the 1959-62 series was not issued until 21/3/62.

There a number of items previously reported that are unlikely to exist unless the two patterns were used concurrently for a period.

G/NSW Type C

2d QEII brown 1959-62 defn (not issued until 21/3/62)

G/NSW Type D

4d QEII red 1959-62 defns (discontinued in 1959)

Similarly one would not expect the following items to be found

G/NSW Type C

2/3 Wattle green on white (1959 flowers defn) (not issued until 28/10/64)

1/2 Tasmanian Tiger (1959-62 defn) (not issued until 21/2/62)

G./NSW Type D

3 1/2d QEII green 1959-62 defn (discontinued in 1959)

1/- Platypus (1959-62 defn) (replaced by 1/- Colombo 30/6/61)

In the listings below are three codes

X - common items sighted

S - scarcer items sighted

U - items not sighted but reported to exist

G/NSW TYPE C				Positions			
				1	2	3	4
1d	purple	QEII defins	1959 series		U		X
3d	green	"		X		U	
3 1/2d	green	"		X			
4d	red	"					X
5d	blue	"			X		X
4d	150th Anniversary of the Post Office				X		
1/6	Christmas Bells	1959 Native Flowers		X			
2/-	Flannel Flower	"		X		U	
2/5	Banksia	"		X		U	
3/-	Waratah	"		X			
4d	Centenary of Queensland Self Government			X			
5d	Christmas 1959				X		S
6d	Anteater	1959-62 Zoological series			X		X
8d	Tigercat	"			X		X
9d	Kangaroo	"			X		U
11d	Bandicoot	"					X
1/-	Platypus	"			X		X
5d	50th Anniversary of the Girl Scout Movement						X
5d	Centenary of Exploration of the Northern Territory						X
5d	Christmas 1960				U		
1/-	Colombo Plan			X		U	
5d	Christmas 1961				U		

G/NSW Type D					Positions								
					1	2	3	4	5	6	7	8	
1/2d	Kangaroo	1937-56 Zoological	No wmk			U		X					

2d	Elizabeth yellow -green 1950 definitives	No wmk		X		X				
2/6	Aborigine	"	X	S	X					
4d	QEII lake 1955-57 definitives			S						
10d	QEII blue	"				U				
1d	QEII	1959-62 definitives		X		X				
2d		"		X		X				
3d		"	X	S	X					
5d		"		X		X				
1/6	Christmas Bush	1959 Native flowers	X		X					
2/-	Flannel Flower	"	X		X					
2/3	Wattle Green/Maize	"	S							
2/5	Banksia	"	X		X				U	
3/-	Waratah	"			X					
6d	Anteater	1959-62 Zoological Series		X		X				U
8d	Tigercat	"		X		X				
9d	Kangaroo	"		X		X				
11d	Bandicoot	"		X		X				
1/2	Tasmanian Tiger	"	X		U					
1/-	Colombo Plan		X	U	X	S	U			U
5/-	Stockman (1961) cream paper			X		X				
5d	QEII green	1963 definitive		X		X				
5d	" red	"		X		X				
4/-	Tasman	1963/4 Navigators		S						
5/-	Dampier	"	X		U					
£1	Bass	"			S					
£2	King		U							
6d	Thornbill	1964 Birds	X	X	X	X				
9d	Magpie	"			U					
1/6	Galah	"	X	X	X					

2/-	Golden Whistler	"	X	X	X	X				
2/5	Blue Wren	"			S					
2/6	Scarlet Robin	"	U	U	U	S				
3/-	Straw-necked Ibis	"	U	S	S					
5d	Christmas 1965				U					

Can anyone confirm the existence of any of the items marked U or those thought not to exist ?

AN INTERESTING COMPANY "PERFIN"

John Amiet has reported a South Australian stamp with 1904 postmark with the partial "perfin" shown. Because of the overall size of this "perfin", it is probable that it was not intended to be used on stamps. Indeed, it cannot be determined whether the perforating was done to a sheet of stamps or to a document on which the stamp happened to be affixed.

The address part of the pattern is part of " King William Street, Adelaide". The partial word on the top line gives a clue to the user. In the 1905 Sands & McDougall Directory of South Australia, tenants in King William Street whose names or occupations could match this wording were W.C. Rigby, bookseller & stationer, at number 74, and Sands & McDougall, printers and stationers at number 64.

Experimenting with different fonts gave a match with the partial perfin for Ariel narrow(or Helvetica narrow) sizes 24/20. When the company name/occupation /address was typed in this font., the exact correspondence of the positions of the set of letters in the perfin matched that of W.C. Rigby as shown. It is of note that this company also used WCR.1 and RIGBYADELAIDE.1 at about the same time. We do not yet have any proof that Sands & McDougall used a perforator in South Australia, although they may well have been agents for a manufacturer of perforators since the ledgers of Elder Smith & Co Ltd showed several entries for the purchase of stamps from Sands & McDougall.



W. C. RIGBY
BOOKSELLER & STATIONER
74 KING WILLIAM STREET
ADELAIDE

SERVICE PUNCTURES IN NEW SOUTH WALES John Mathews

The perfins referred to as 'Victorian Service Punctures' are well known to collectors, and contribute a large proportion of the perfin users from that State. Indeed most of us will have at one time or another pondered over whether or not a specific example is a new pattern, a variety of a pattern already known, or simply a known pattern with one or more pins "missing".

Not so well known, perhaps, are a handful of perfins of a similar style used by companies located in New South Wales. Like their Victorian counterparts, they have two styles, corresponding to the use of square and diamond arrangements of grid holes (relative to the uprights of the letters) in which to place the pins.

"Square" grid arrangements include AK.3, BR.1 and BR.2, MB.1 to MB.4, R.6 and RO.1; "diamond" grid arrangements include B.1 to B.10, BCL.1 to BCL.7, and JH.1 to JH.3, plus supplementary patterns of each of these letter combinations (FG.4 may also be formed in the same manner).

Of particular interest among these are the "B" and "BCL" families of perfins. The various "BCL" perfins are known used from 1901 to 1922, while the use of the "B" perfins is spread through the period 1922 to 1929, and these sequential periods might suggest that they had the same user. "Commercial Perfins of Australia" list two possible users of the "BCL" patterns - BCL Engineering and Motor Co. Ltd., 126 Sussex Street, Sydney, and Birt and Co. Ltd., meat exporters and shipping agents, 4 Bridge Street, Sydney.

I have a plain white cover affixed with two stamps punctured BCL.6, and while it is frustrating that there is no direct evidence of the identity of the sender (the back flap of the envelope is missing!), perhaps there is a clue in the Danish addressee which was a shipping company.

Further clues might be provided by two other perfins of similar style. One is "B.CL", with a pin hole between the "B" and "C" (about halfway up), and the other is "BCo", the "o" being smaller than the other two letters.

Most of my copies of the various "B" and "BCL" perfins have either "SYDNEY" or SPECIAL/NSW postmarks. However, some of the BCL.1 examples are postmarked "THE EXCHANGE" which was in Bridge Street, and one is postmarked "GEORGE ST. NTH."

Birt and Co. Ltd. were trading near, and in, Bridge Street from the beginning of the century until the early 1930s, whereas BCL Engineering and Motor Co. Ltd. were only listed in Sands' Sydney Directories from 1908 to 1911 inclusive.

This collection of "circumstantial evidence" would point to Birt and Co. Ltd. being the more likely user of all the "B", "BCL", "B.CL" and "BCo" perfins. Are any other covers known? Trying to establish who performed the perforating of these patterns is more difficult, if indeed more than one company's perforating was done by the same person. The only pattern among those listed which has a confirmed user is R.6 of Royle and Co., of 5 Bond Street. Its period of use was from 1906 to 1908, and just prior to this time Birt and Co. Ltd. were at 3 Bond Street!

Encouraged by this coincidence, I searched Sands' Sydney Directories of the period for other coincidences and found the following. In 1900, a Jos. Tscherne, engraver and diesinker, had premises at 14 Bond Street. In 1901, he moved to 4 Bond Street. Other occupants of premises in Bond Street in 1900 included Alfred Kerr, importer (at number 3 until 1901)(AK.3 ?), M Brodziak, broker, at number 1 (MB.1 to MB.4 ?); and Capt. J. Vine Hall, marine surveyor, (at number 3 until 1916 and from then at number 24) (JH.1 to JH.3?). Perhaps Jos. Tscherne was the craftsman who produced these perfins.

The "B" patterns known to have been used after 1926 (i.e. B.7 and B.9) are of a slightly different style to the earlier ones, being taller and with heavier pins. By 1926 Birt and Co. Ltd were at 4 Bridge Street, parallel to and to the north of, Bond Street.

ANTHONY HORDERN AND SONS

John Mathews

Anthony Hordern landed in Sydney with his family in 1825 and soon afterwards founded a merchant dynasty of sons and grandsons who started as drapers and at one stage, in the 1880s, had six competing shops in Sydney. In fact, Mrs. Hordern appears to have been the first family member to open a commercial enterprise, with a drapery and millinery shop at 17 King Street, Sydney. Up the lane which ran alongside these premises, her husband worked as a coachbuilder.



Anthony Horden (1788-1869)



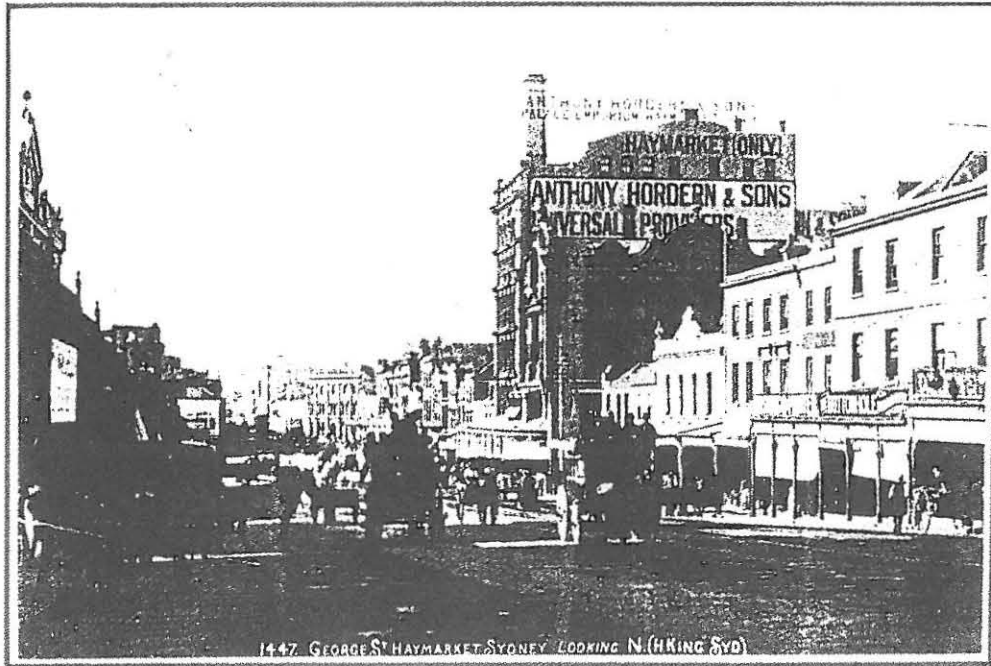
Mrs. Anthony Horden (1792-1871)

Following his return to Sydney from a visit to Melbourne in 1844, their eldest son, Anthony junior, opened a drapery store on Brickfield Hill in partnership with a brother. George Street, which ran past the store, carried all the wool traffic to the wharves, and all the mail coaches also used this road, having their terminus not far from the store. In the gold rush days of the early 1850s, everyone heading for the diggings from the city would also have passed this way.

In 1856, Anthony junior moved into larger premises in the Haymarket area, a stopping place for the incoming bullock teams before the long haul up Brickfield Hill. By the 1870s, his two sons, Anthony 3rd and Samuel, had joined the firm. Shortly afterwards they expanded the business with the construction of the building which was to become the Palace Emporium, employing over 300 people. The firm boasted that they sold "everything from a needle to an anchor" and referred to themselves as "Universal Providers".

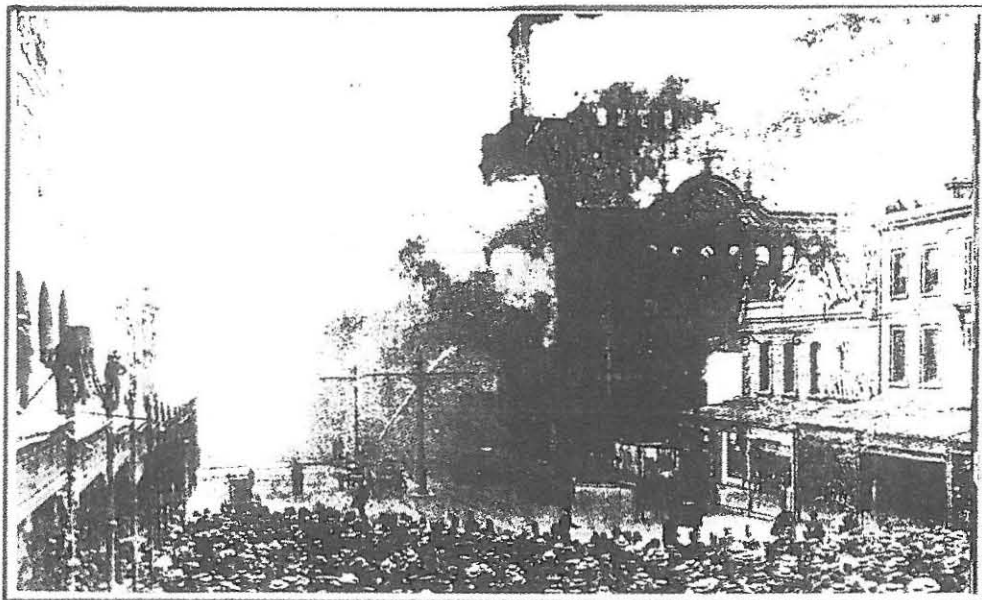
Following the boom years of the 1880s came the Crash of 1893 when some banks suspended

payments and many businesses collapsed. However, Horderns were strictly cash traders and were able to ride out the lean years without the liquidity problems others experienced.



In 1896, Samuel Hordern voluntarily introduced a half-holiday on Saturdays, an unprecedented step in those days, and even more "enlightened" in the view of recent trends in commercial trading.

On 10th July 1901, Horderns' business almost succumbed to a disastrous fire which gutted three of their buildings and badly damaged a fourth. The following day, Samuel Hordern leased from the City Council the vacant Exhibition Building in Prince Alfred Park, just south of the Central Railway Station, and opened for business with stock he had amassed in a warehouse in anticipation of import duties which he felt sure the new Federal Government would introduce following Federation.

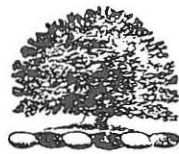


The Haymarket store was rebuilt and in 1904, a new building was commenced on the whole block on Brickfield Hill where the original store stood in 1844. According to legend, Anthony Hordern junior had planted two oak trees in his back yard in the 1840s.



They were the origins of the famous motto of the firm "While I Live, I'll Grow" which appeared on their trade mark along with a picture of an oak tree. These trees had to be cut down to make way for the new building. Acorns from these were planted on the family property south of Camden (southwest of Sydney), and those who can remember driving along the old Hume Highway from Sydney to Canberra or Melbourne will probably recall the imposing sight of a magnificent spreading oak on the skyline of the ridge of Razorback Range, and the Horderns' motto on a billboard nearby.

Some time ago, the tree died, believed to have been poisoned by vandals. Shortly afterwards, the business was sold. Somewhat sadly, a landmark was lost when the premises were demolished to make way for a new "World Square" complex. Ironically, in 1996, this site is still a hole in the ground.



WHILE I LIVE I'LL GROW.

The essential particulars of the Trade Mark are the following:—The device and the motto "While I live I'll grow."

4297. (Vol. 2, No. 23.) Articles of Clothing. SAMUEL HORDERN, trading under the name or style of ANTHONY HORDERN AND SONS, of New Palace Emporium, Brickfield Hill, Sydney, in the State of New South Wales, universal provider.—14th May, 1907.